

SOUTHERN
CROSSROADS
PATTERN BOOK

4100 Maple Avenue
Halethorpe, MD
PAI#13-0239
MAJ-2020-00010
February 19, 2021



DEVELOPMENT
TEAM

Developer

Rock Realty, LLC

6800 Deerpath Road, Suite 100

Elkridge, MD 21075

Contact: James Fraser

Civil Engineer

Bohler Engineering VA, LLC

901 Dulaney Valley Road, Suite 801

Towson, MD 21204

Contact: Brandon Rowe, Matthew Pohlhaus

Attorney

Smith, Gildea & Schmidt

600 Washington Avenue, Suite 200

Towson, MD 21204

Contact: Jason T. Vettori

TABLE OF CONTENTS

TITLE	PAGE NUMBER
Development team	2
Table of contents	3
Site information	4
Site Aerial	5
Zoning map	6
Photo Location Key	7
Site Context Photos	8 - 14
Illustrative site plan	15
Front Load Rendering, Elevations & Floorplans	17 - 36
Rear Load Rendering, Elevations & Floorplans	37 - 56
Color Palette	57
Site Details	58 - 59

Note

The elevations and plans contained herein are preliminary schematic representation and guidelines only.

They are subject to modifications as circumstances warrant.

It is intended that this development will be constructed in a manner consistent with the representations herein, while recognizing that modifications may be re-quired as the project evolves to final design.

The Director of the Office of Planning shall have discretion to administratively approve non-material modifications to the Plan and Pattern Book.

SITE INFORMATION



Site Address	4100 Maple Avenue
	Halethorpe, MD 21227
Acreage:	71.98
Current Zoning:	DR 5.5; DR 2; ML; BR
Existing Land Use:	Medical Campus
Proposed Use Land Use:	196 Townhomes (71 single garages and 125 double garages)
Election District:	13th
Councilmanic District:	District I
ADC Map Location:	42 B 8; 4983 A I
Parcel Numbers:	861; 393; 578
Tax Map:	108; 109; 109
Watershed:	Patapsco River
Regional Planning District:	Arbutus/Landsdowne
Schools:	Halethorpe Elementary
	Arbutus Middle
	Landsdowne High

SITE
AERIAL



ZONING MAP

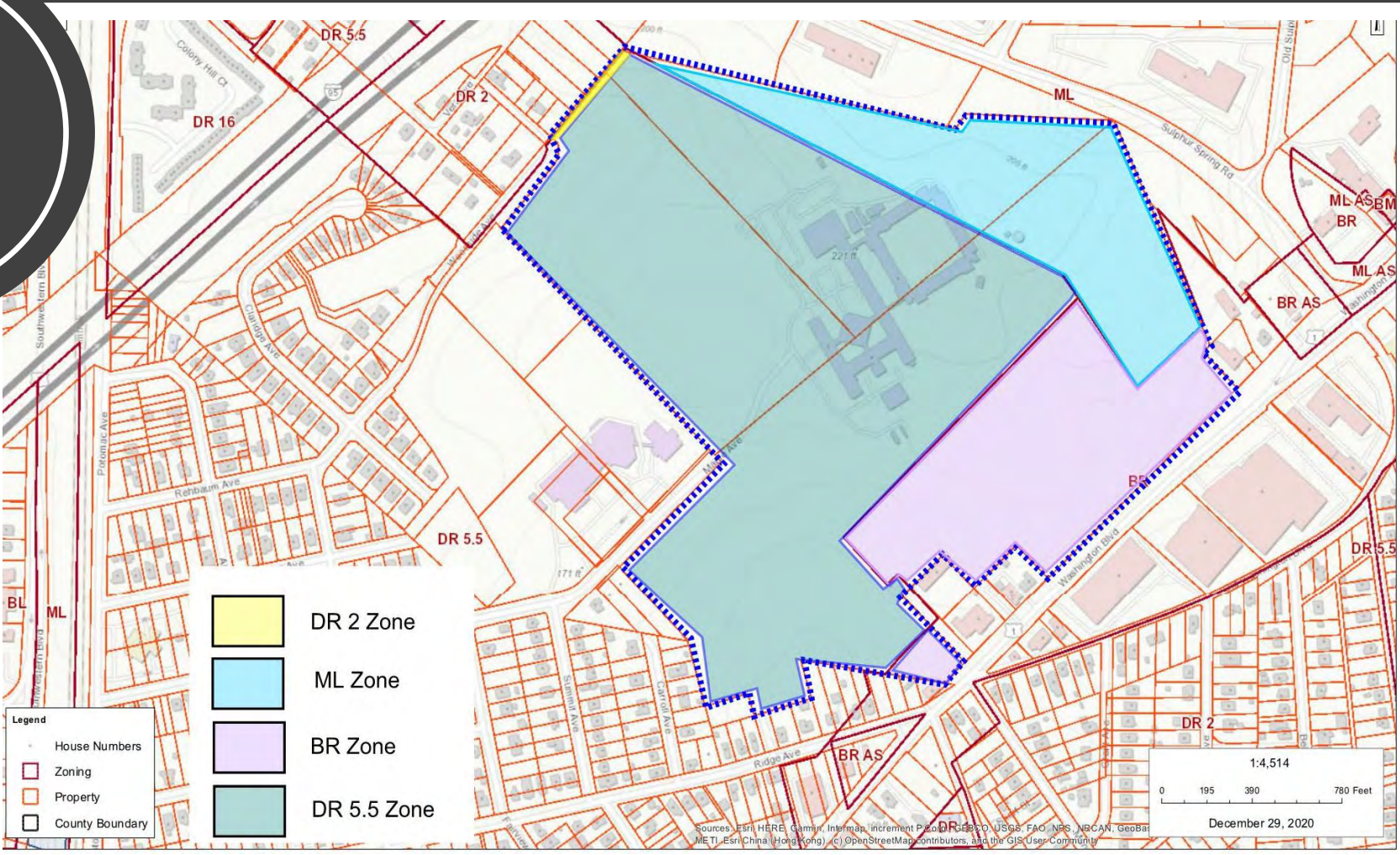
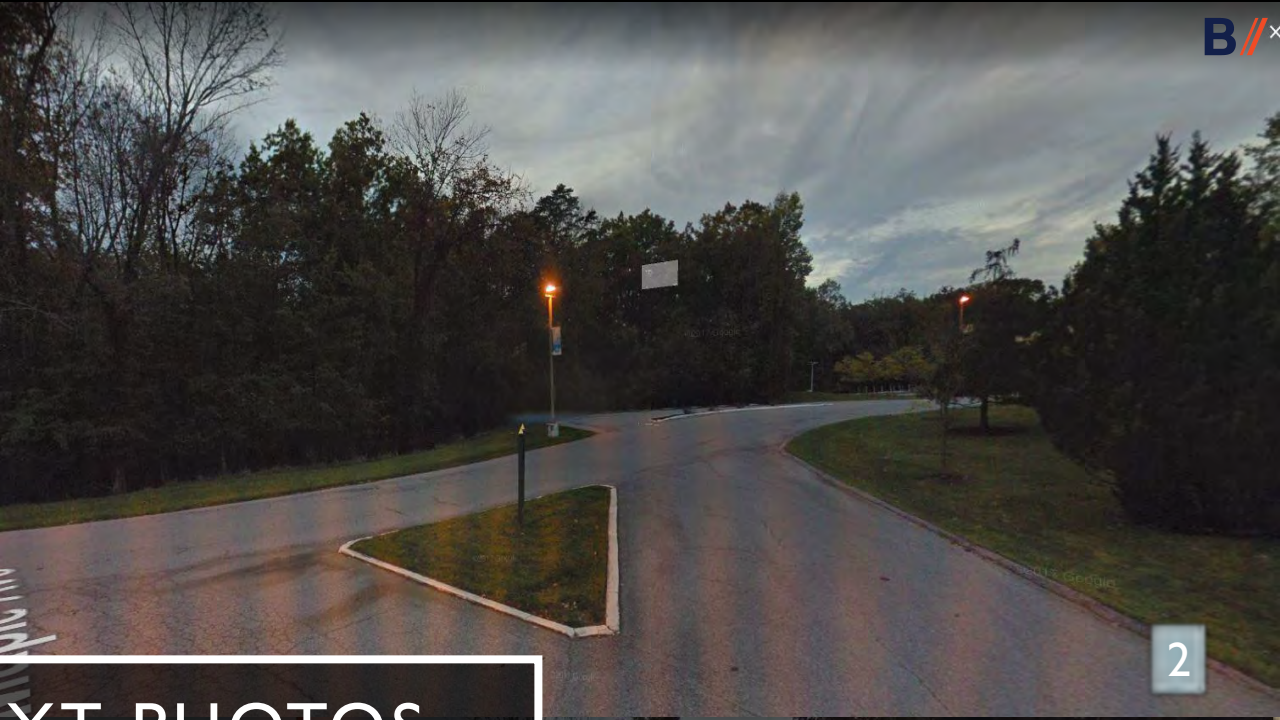
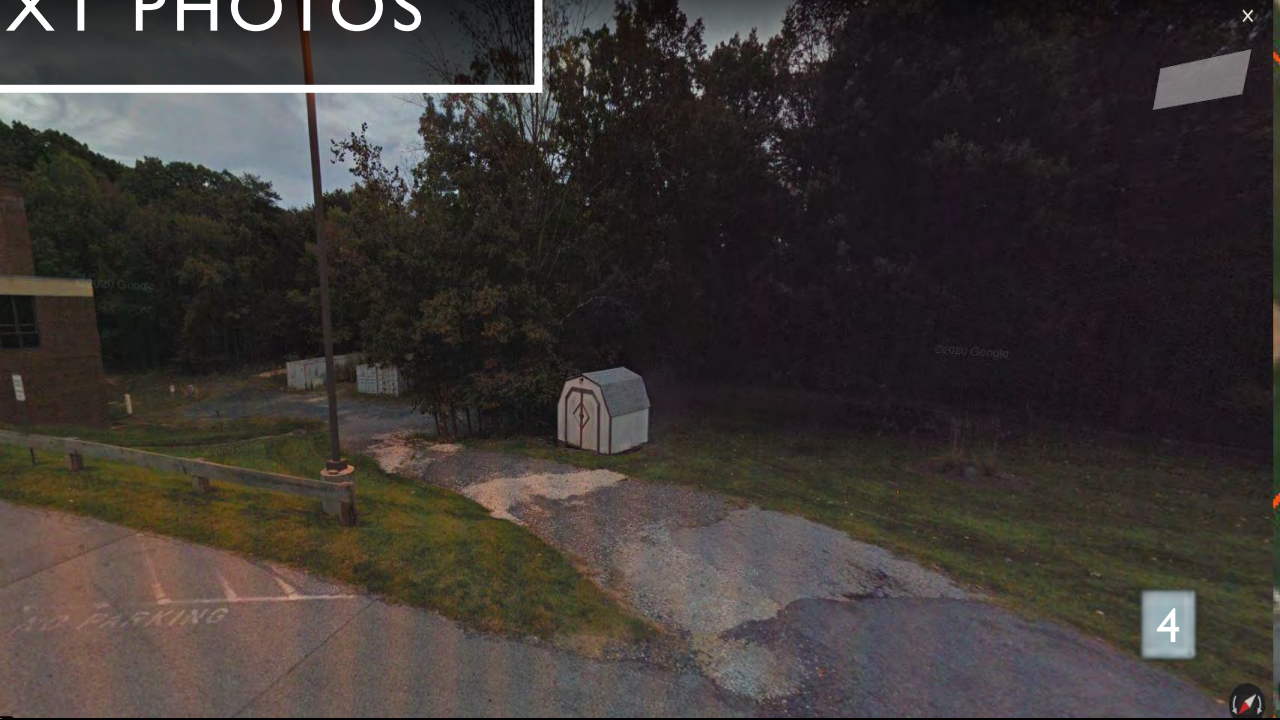


PHOTO LOCATION KEY





SITE CONTEXT PHOTOS





SITE CONTEXT PHOTOS





9



10

SITE CONTEXT PHOTOS



11



12



SITE CONTEXT PHOTOS





17



18

SITE CONTEXT PHOTOS



19



20



21



22

SITE CONTEXT PHOTOS



23



24

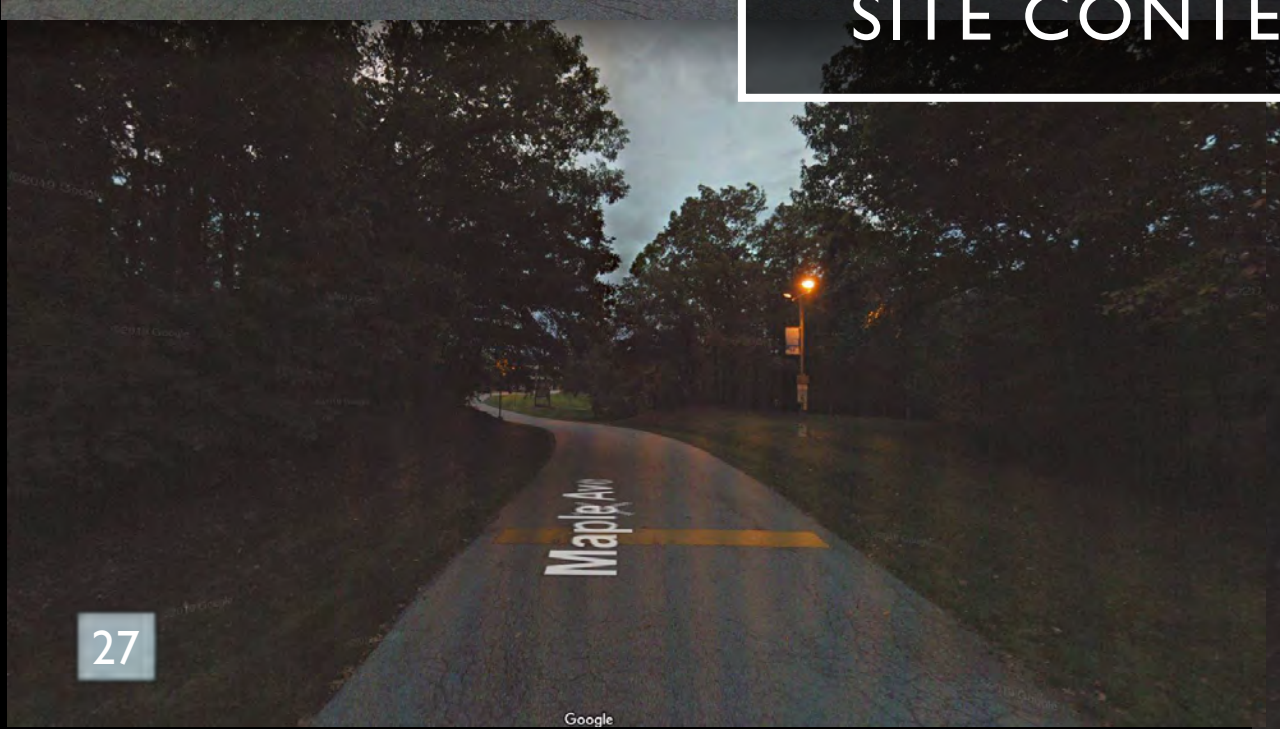


25



26

SITE CONTEXT PHOTOS



27



28

ILLUSTRATIVE SITE PLAN



ARCADIA 20' FRONT LOAD UNIT

ARCADIA
FRONT LOAD
UNIT



LOT 1:
ARCADIA - REVERSE
BRICK: CHESAPEAKE
SIDING: MIDNIGHT BLUE
DOOR: CRABBY APPLE (SW 7592)
SHUTTER: BLACK

LOT 2
ARCADIA - STANDARD
BRICK: ROCKVIEW
SIDING: TUSCAN CLAY
DOOR: CAPE VERDE (SW 6482)

LOT 3
ARCADIA - STANDARD
SIDING: TUSCAN CLAY
DOOR: DEWBERRY (SW 6552)

LOT 4
ARCADIA STANDARD
BRICK: ASHFIELD
SIDING: PLATINUM GRAY
DOOR: CAPE VERDE (SW 6482)

LOT 5
ARCADIA - STANDARD
BRICK: SILVERVIEW
SIDING: GLACIER WHITE
DOOR: CRABBY APPLE (SW 7592)

LOT 6
ARCADIA - STANDARD
SIDING: AGELESS SLATE
DOOR: DEWBERRY (SW 6552)

SAMPLE STRIP ELEVATION - ARCADIA FL MODEL

BUILDING COLOR SCHEME:
ALL TRIM, WINDOWS, AND GARAGE DOORS TO BE WHITE
CHARCOAL STANDING SEAM METAL & SHINGLE ROOF



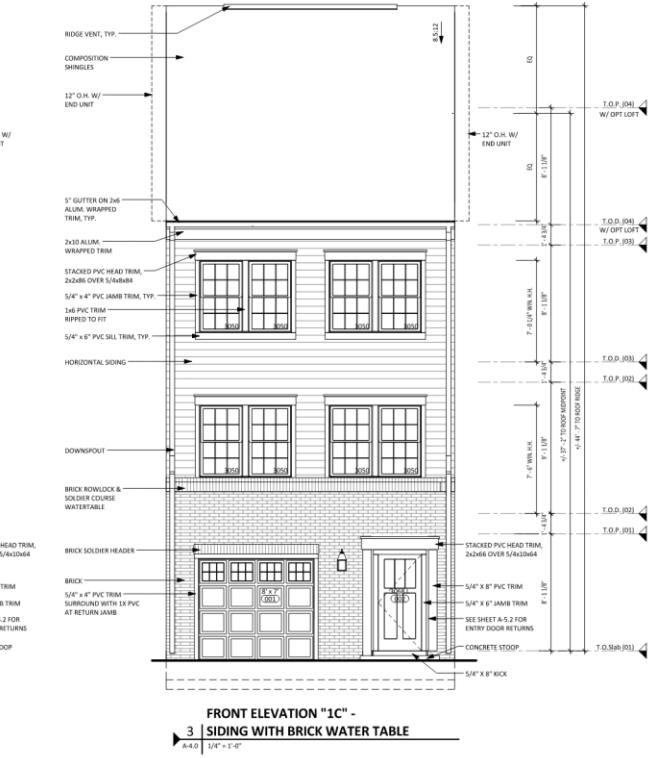
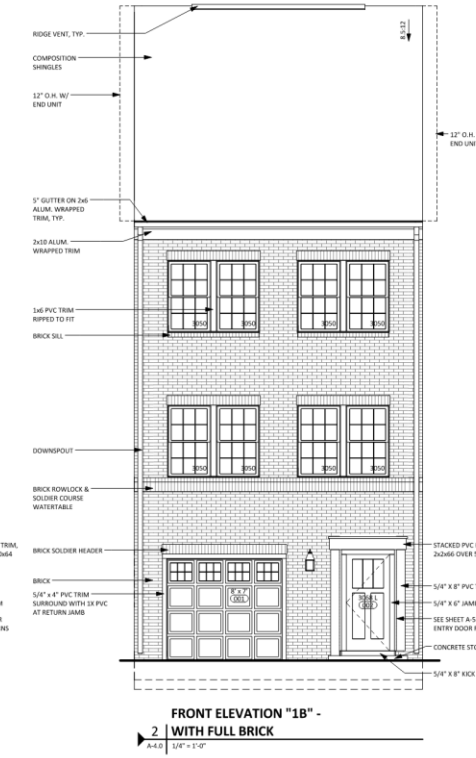
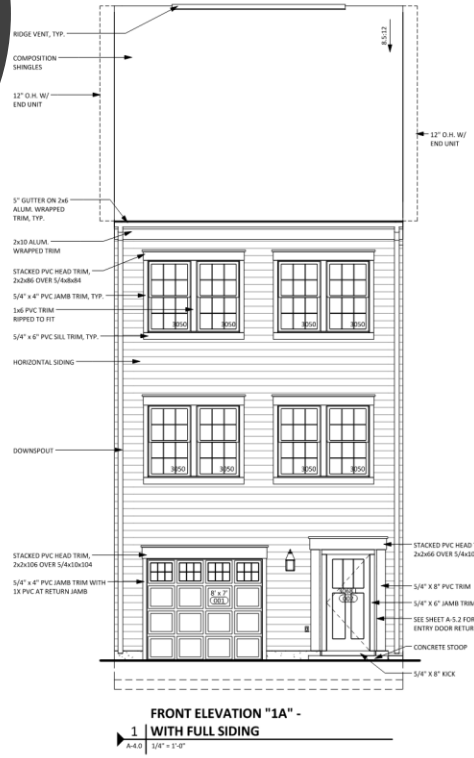
Architecture + Planning
888.456.5849
ktgy.com

LENNAR
The Home of Everything's Included!

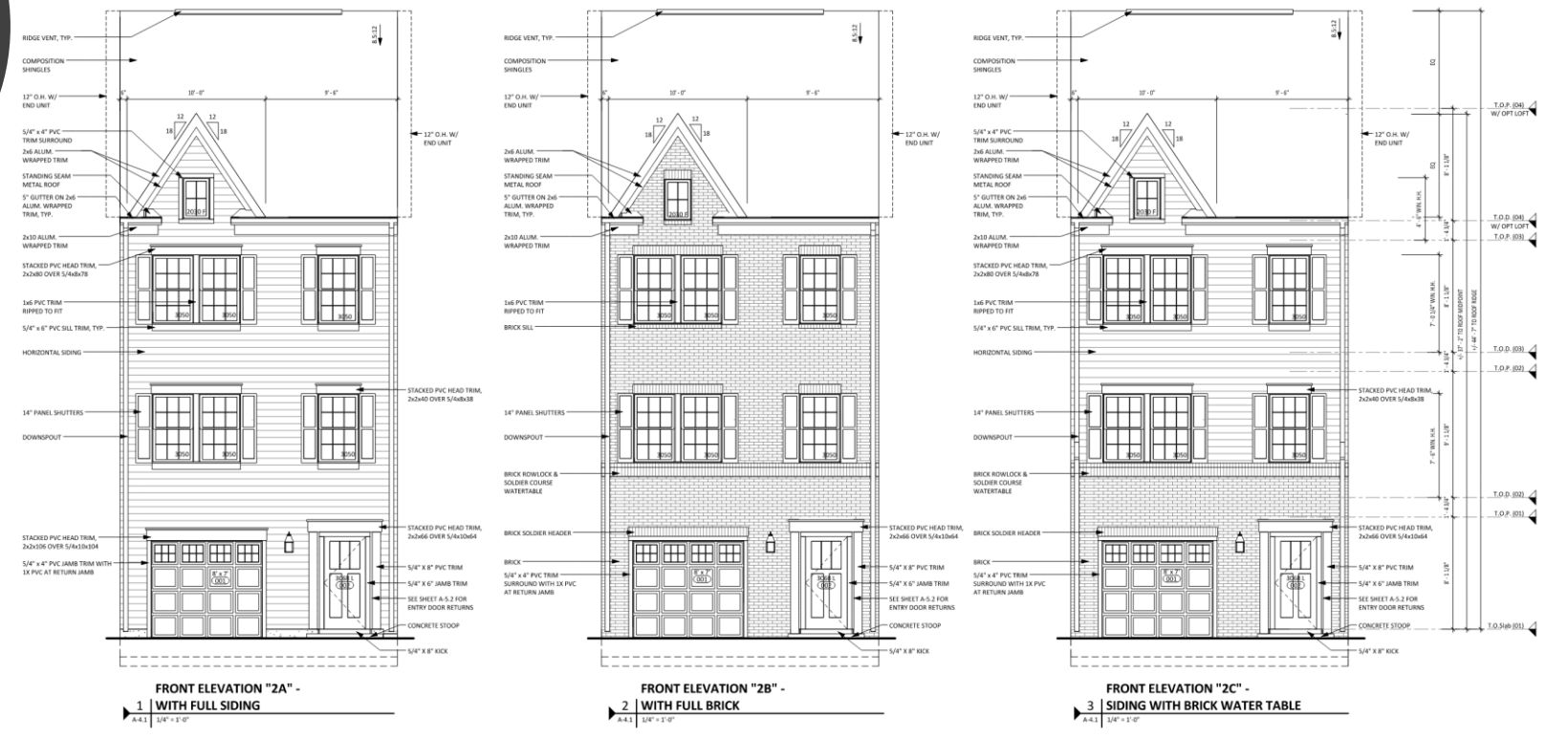
Southern Crossroads - 4100 Maple Avenue, Halethorpe MD

2/19/2021

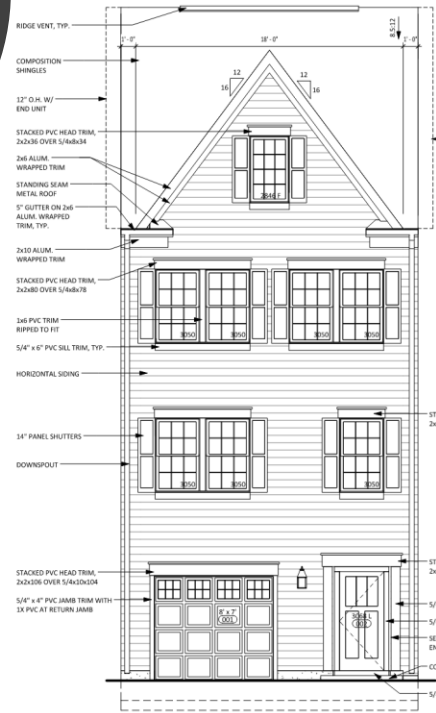
FRONT ELEVATION OPTIONS



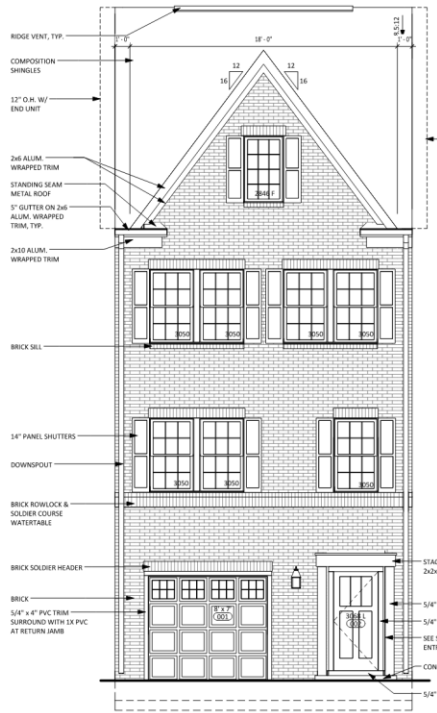
FRONT ELEVATION OPTIONS



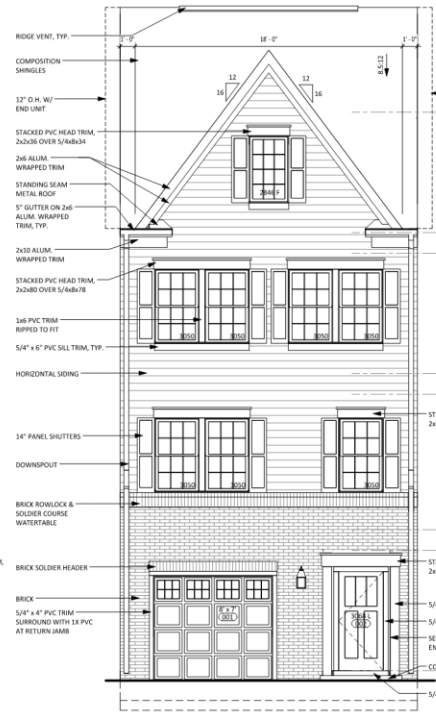
FRONT ELEVATION OPTIONS



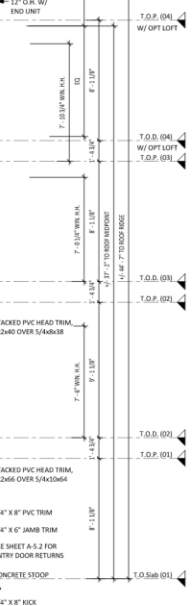
FRONT ELEVATION "3A" -
1 WITH FULL SIDING
 A-4.2 1/4" = 1'-0"



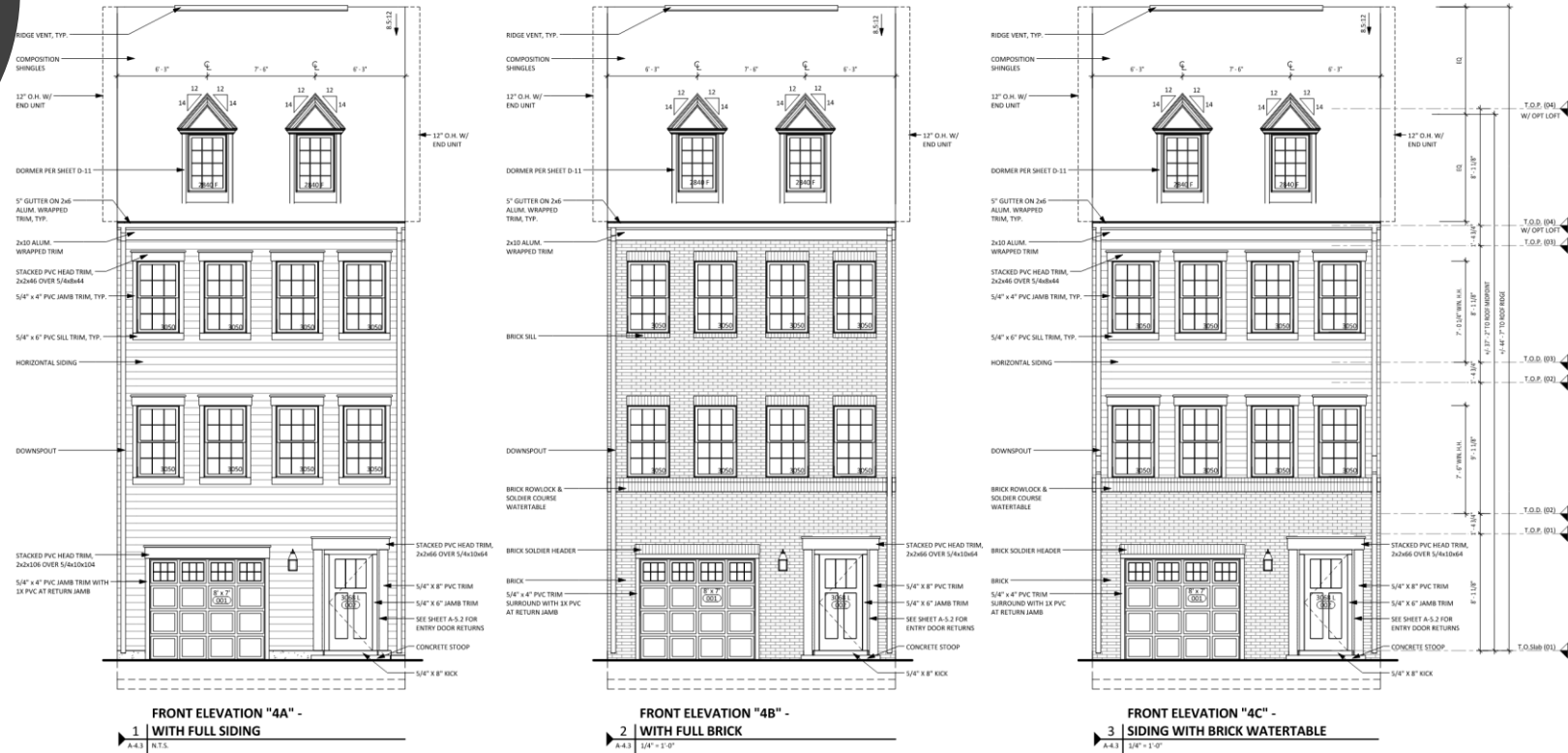
FRONT ELEVATION "3B" -
2 WITH FULL BRICK
 A-4.2 1/4" = 1'-0"



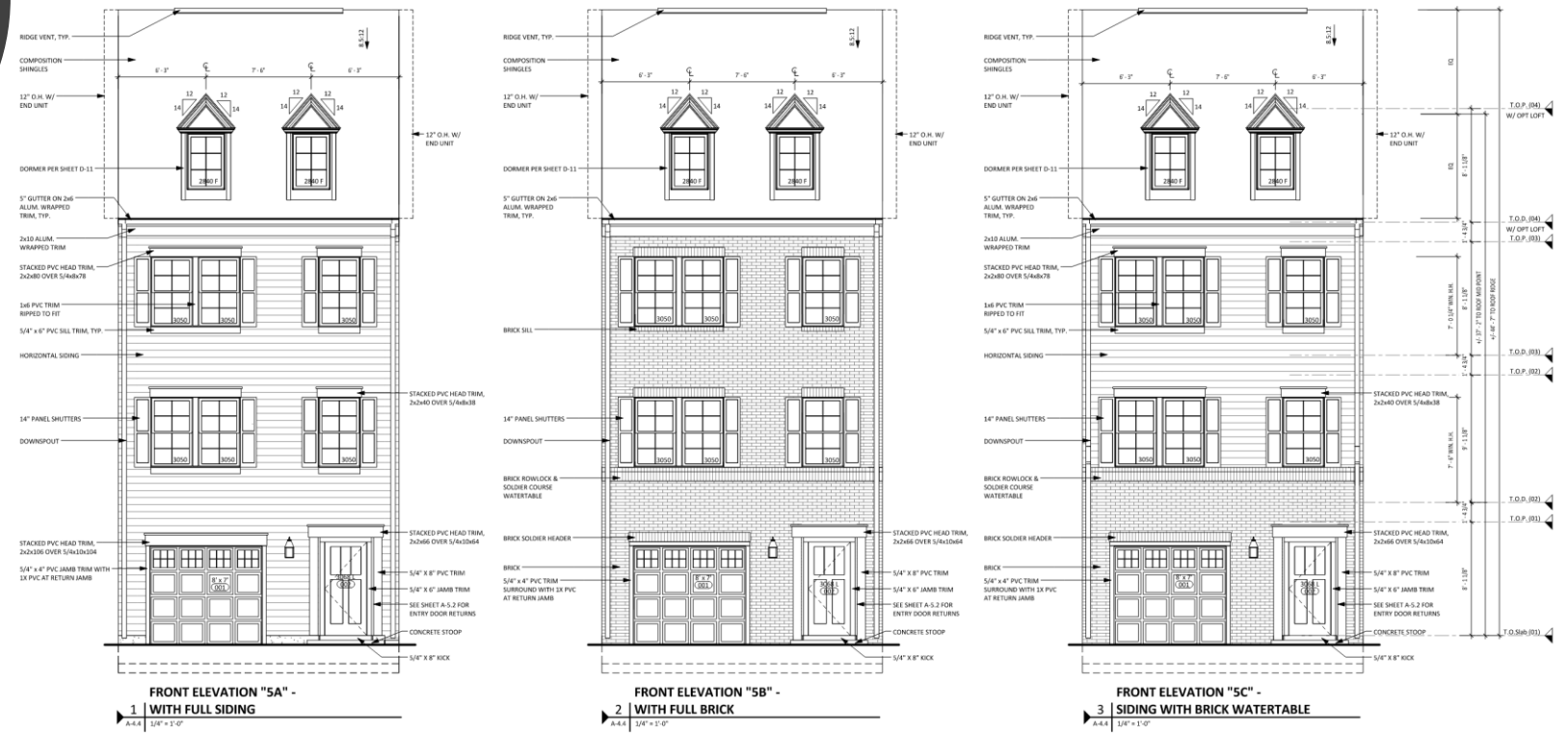
FRONT ELEVATION "3C" -
3 SIDING WITH BRICK WATER TABLE
 A-4.2 1/4" = 1'-0"



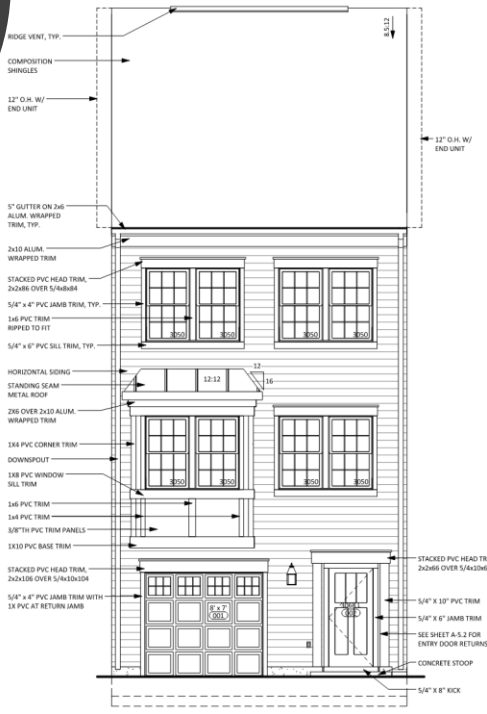
FRONT ELEVATION OPTIONS



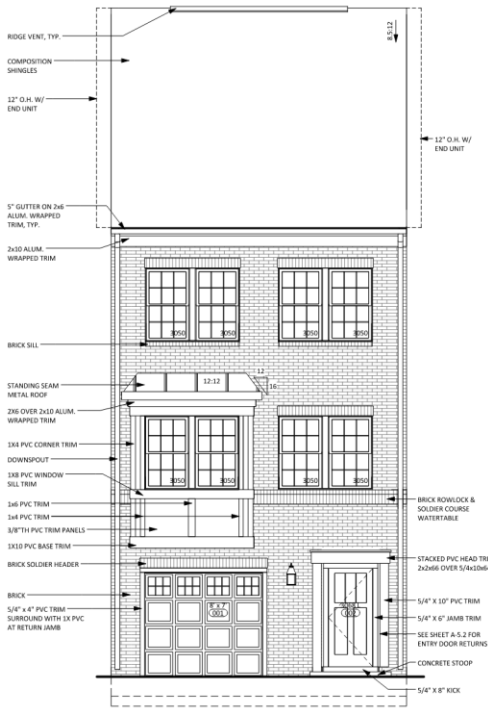
FRONT ELEVATION OPTIONS



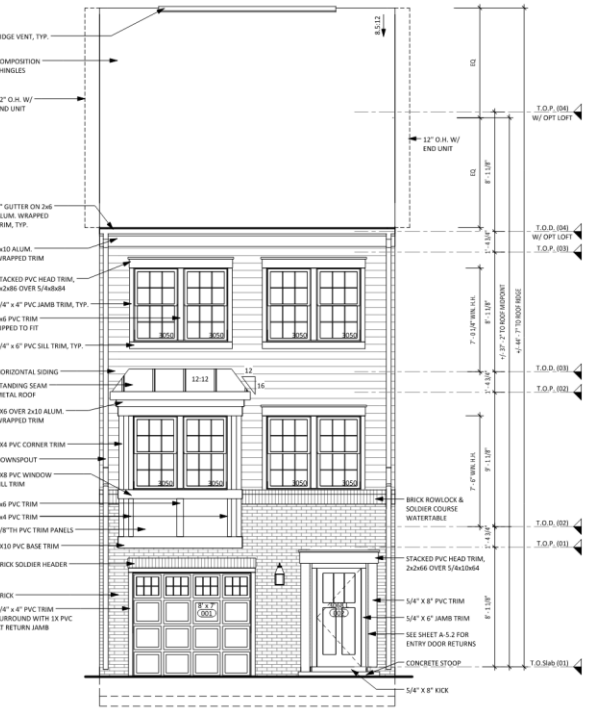
FRONT ELEVATION OPTIONS



FRONT ELEVATION "6A" -
1 WITH FULL SIDING
A4.5 1/4" = 1'-0"

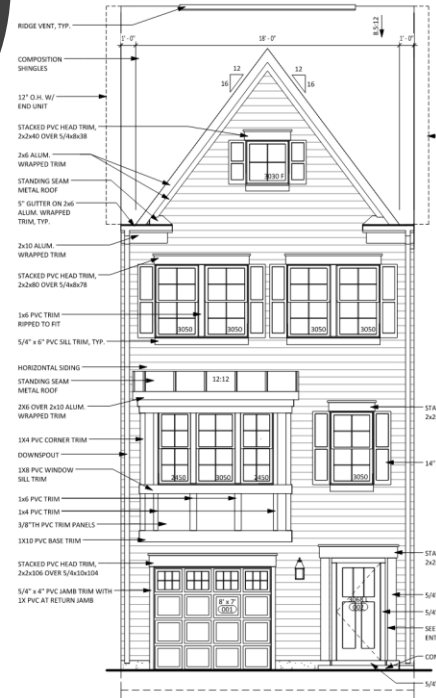


FRONT ELEVATION "6B" -
2 WITH FULL BRICK
A4.5 1/4" = 1'-0"

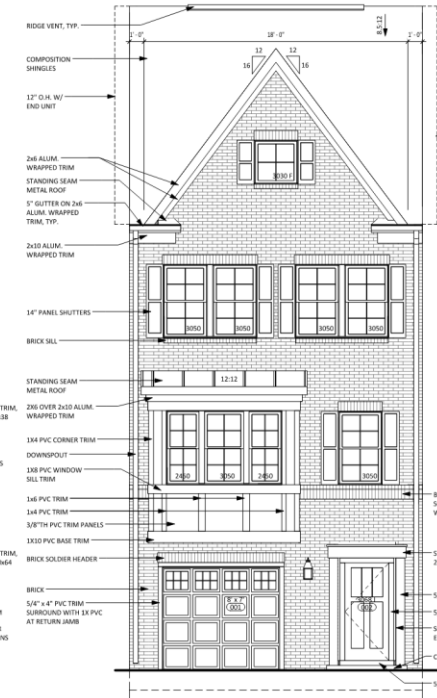


FRONT ELEVATION "6C" -
3 SIDING WITH BRICK WATERTABLE
A4.5 1/4" = 1'-0"

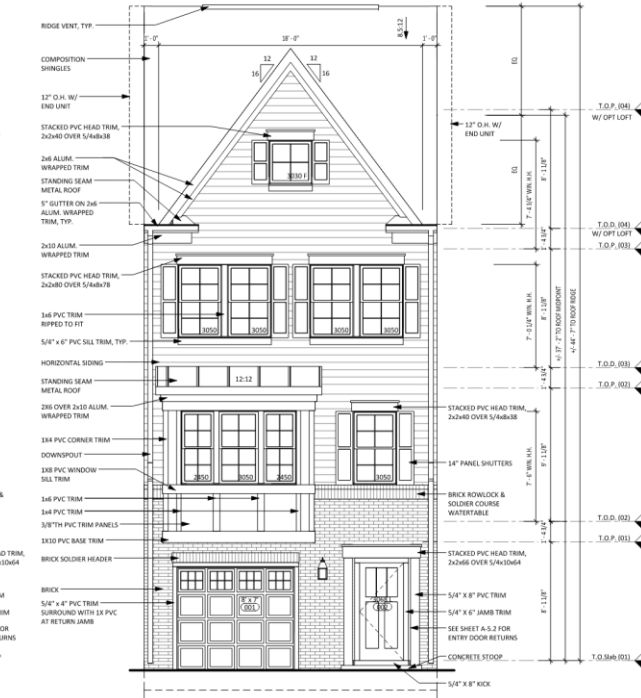
FRONT ELEVATION OPTIONS



FRONT ELEVATION "7A" -
1 | WITH FULL SIDING
A-4.6 | 1/4" = 1'-0"



FRONT ELEVATION "7B" -
2 | WITH FULL BRICK
A-4.6 | 1/4" = 1'-0"



FRONT ELEVATION "7C" -
3 | SIDING WITH BRICK WATERTABLE
A-4.6 | 1/4" = 1'-0"

FRONT LOAD UNIT
 REAR ELEVATION



LOT 6
 ARCADIA - STANDARD
 SIDING: AGELESS SLATE
 DOOR: DEWBERRY (SW 6552)

LOT 5
 ARCADIA - STANDARD
 BRICK: SILVERVIEW
 SIDING: GLACIER WHITE
 DOOR: CRABBY APPLE (SW 7592)

LOT 4
 ARCADIA STANDARD
 BRICK: ASHFIELD
 SIDING: PLATINUM GRAY
 DOOR: CAPE VERDE (SW 6482)

LOT 3
 ARCADIA - STANDARD
 SIDING: TUSCAN CLAY
 DOOR: DEWBERRY (SW 6552)

LOT 2
 ARCADIA - STANDARD
 BRICK: ROCKVIEW
 SIDING: GLACIER WHITE
 DOOR: CAPE VERDE (SW 6482)

LOT 1:
 ARCADIA - REVERSE
 BRICK: CHESAPEAKE
 SIDING: MIDNIGHT BLUE
 DOOR: CRABBY APPLE (SW 7592)
 SHUTTER: BLACK

SAMPLE STRIP ELEVATION - ARCADIA FL MODEL

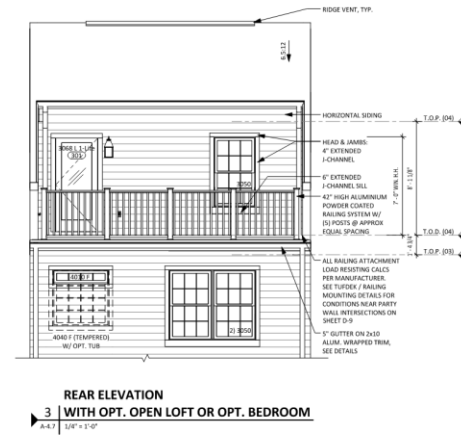
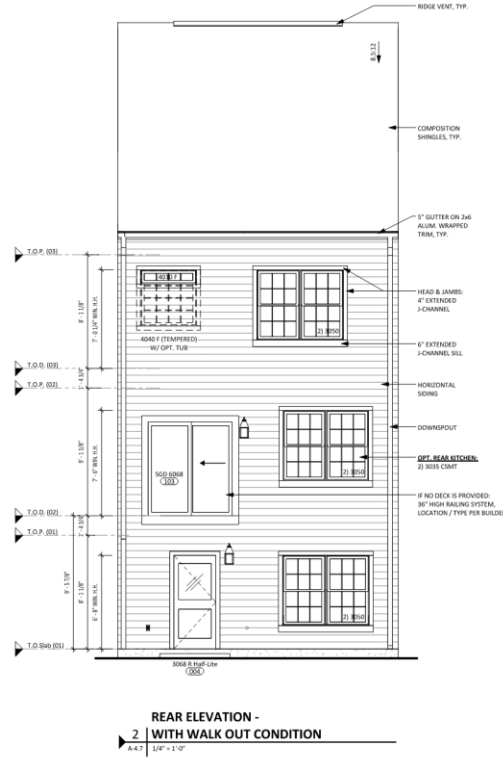
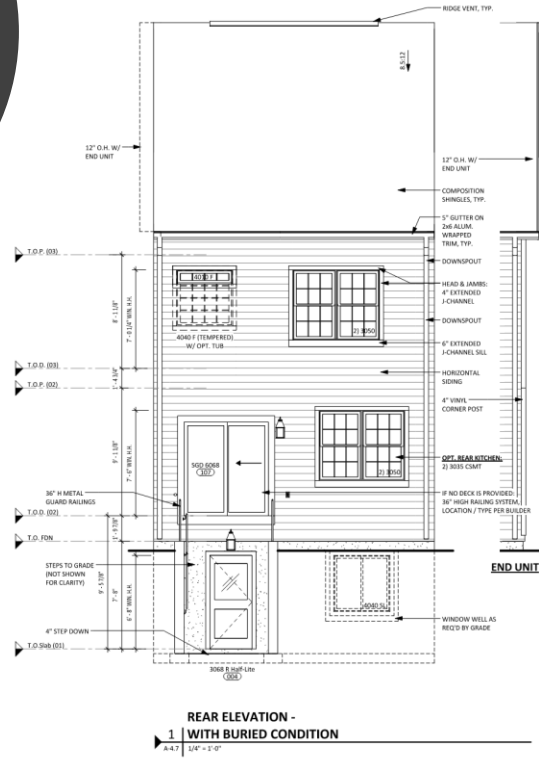
BUILDING COLOR SCHEME:
 ALL TRIM, WINDOWS, AND GARAGE DOORS TO BE WHITE
 CHARCOAL STANDING SEAM METAL & SHINGLE ROOF



Architecture + Planning
 888.456.5849
 ktgy.com



REAR ELEVATION OPTIONS



FRONT LOAD
UNIT

SIDE
ELEVATION



LOT 1:
ARCADIA - REVERSE
BRICK: CHESAPEAKE
SIDING: MIDNIGHT BLUE
DOOR: GRABBY APPLE (SW 7592)
SHUTTER: BLACK

SAMPLE STRIP ELEVATION - ARCADIA FL MODEL

BUILDING COLOR SCHEME:
ALL TRIM, WINDOWS, AND GARAGE DOORS TO BE WHITE
CHARCOAL STANDING SEAM METAL & SHINGLE ROOF



LOT 6
ARCADIA - STANDARD
SIDING: AGELESS SLATE
DOOR: DEWBERRY (SW 6552)

SAMPLE STRIP ELEVATION - ARCADIA FL MODEL

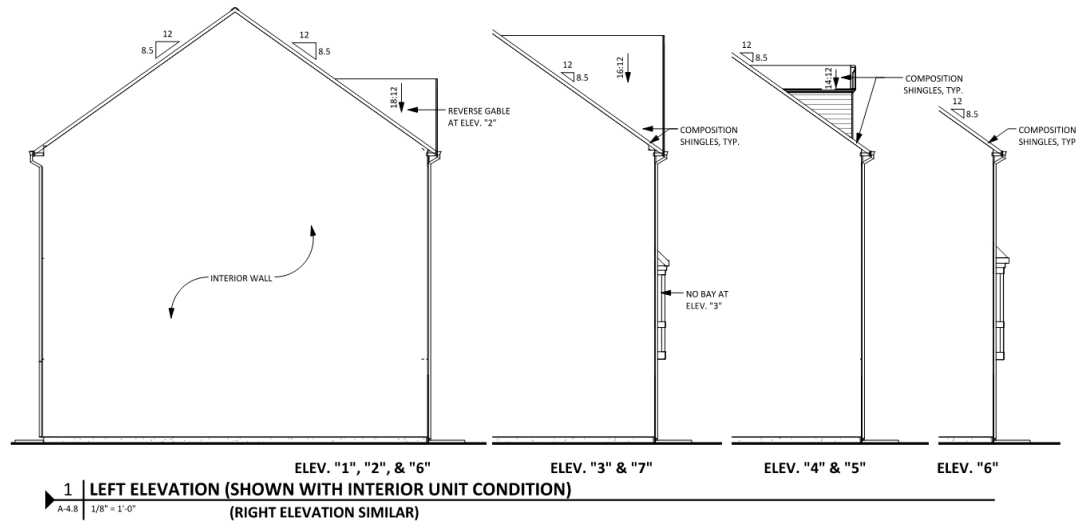
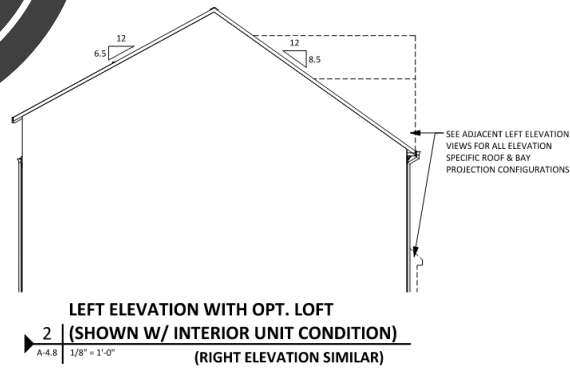
BUILDING COLOR SCHEME:
ALL TRIM, WINDOWS, AND GARAGE DOORS TO BE WHITE



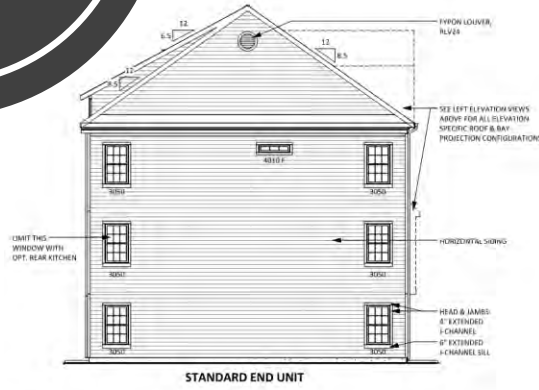
Architecture + Planning
888.456.5849
ktgy.com



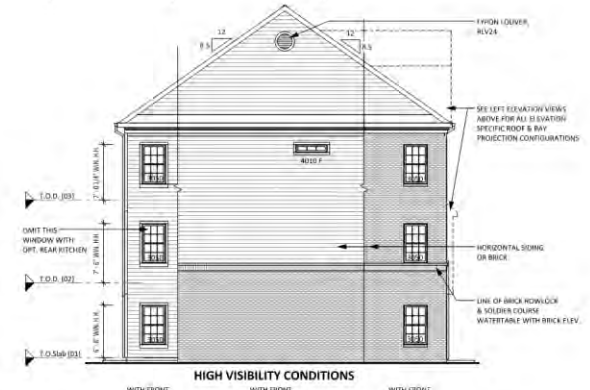
SIDE ELEVATION OPTIONS



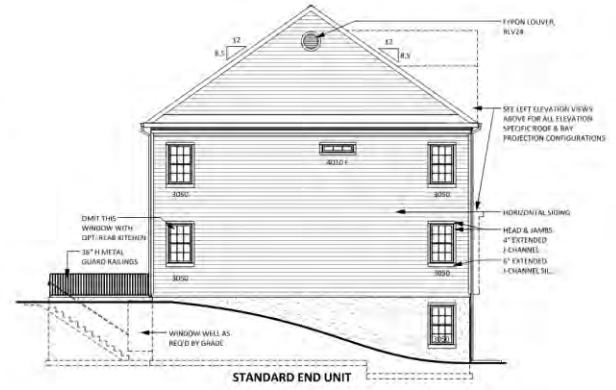
SIDE ELEVATION OPTIONS



3 | LEFT ELEVATION WITH OPT. LOFT
A-4.8 | 12' x 14'

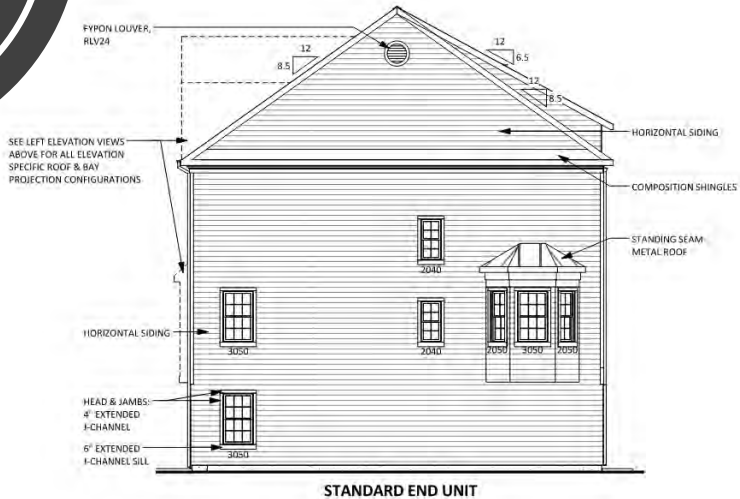


4 | LEFT ELEVATION WITHOUT OPT. LOFT (SHOWN WITH HIGH VISIBILITY CONDITIONS)
A-4.8 | 12' x 14'



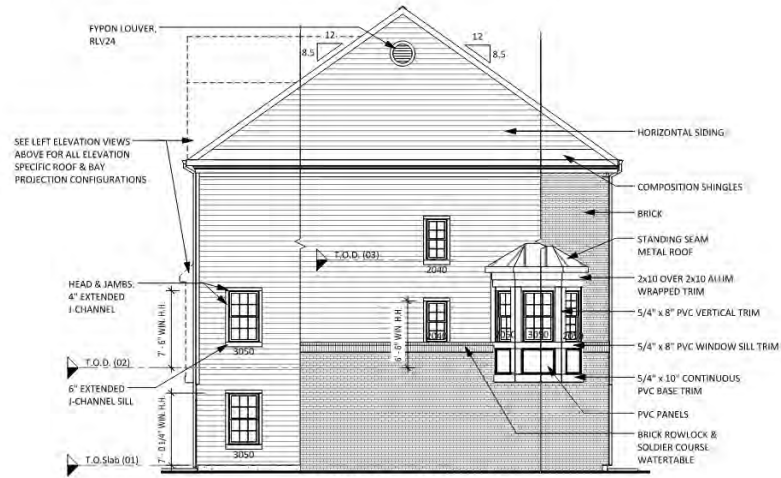
5 | LEFT ELEVATION - (END UNIT BURIED AT REAR)
A-4.8 | 12' x 14'

SIDE ELEVATION OPTIONS



STANDARD END UNIT

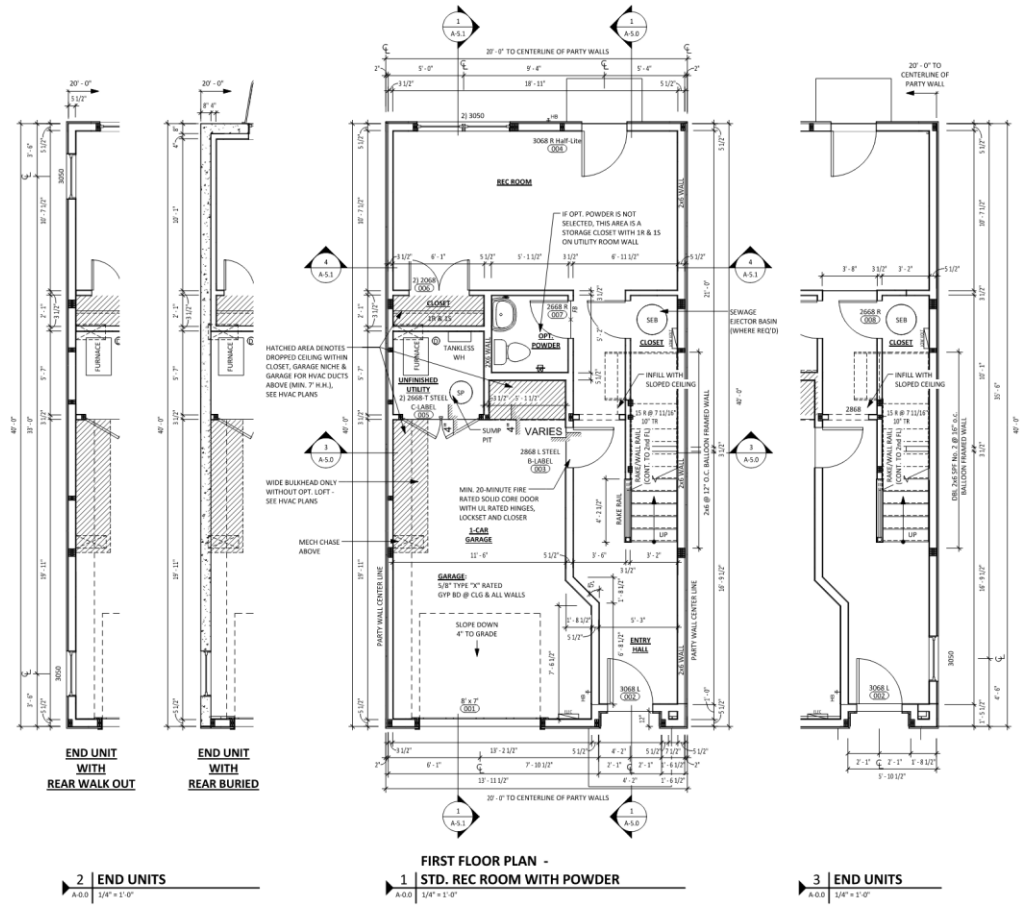
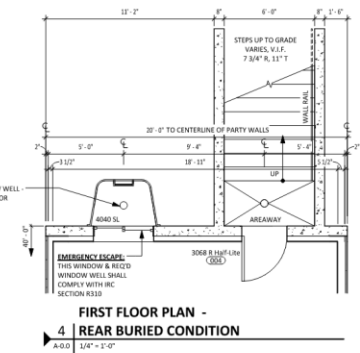
6 | RIGHT ELEVATION WITH OPT. LOFT
A-4.2 | 1/8" = 1'-0"



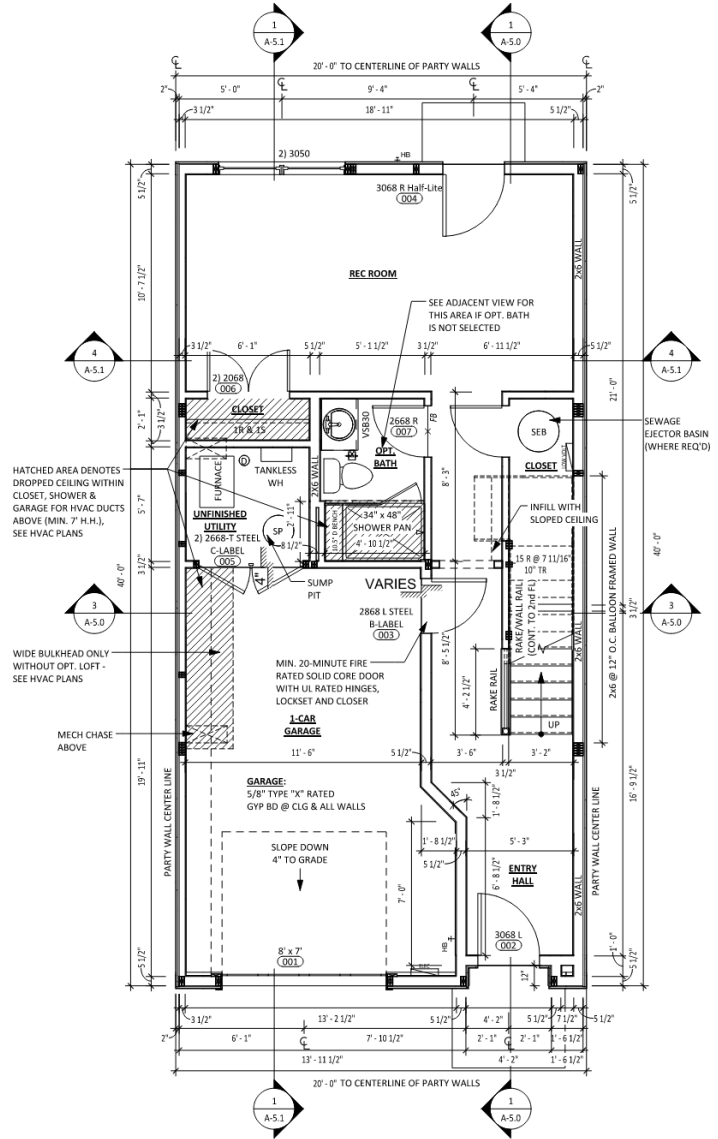
HIGH VISIBILITY CONDITIONS

WITH FRONT ELEV. "B" (FULL BRICK) | WITH FRONT ELEV. "C" (PARTIAL BRICK) | WITH FRONT ELEV. "A" (FULL SIDING)
RIGHT ELEVATION WITHOUT OPT. LOFT
7 | (SHOWN WITH HIGH VISIBILITY CONDITIONS)
A-4.8 | 1/8" = 1'-0"

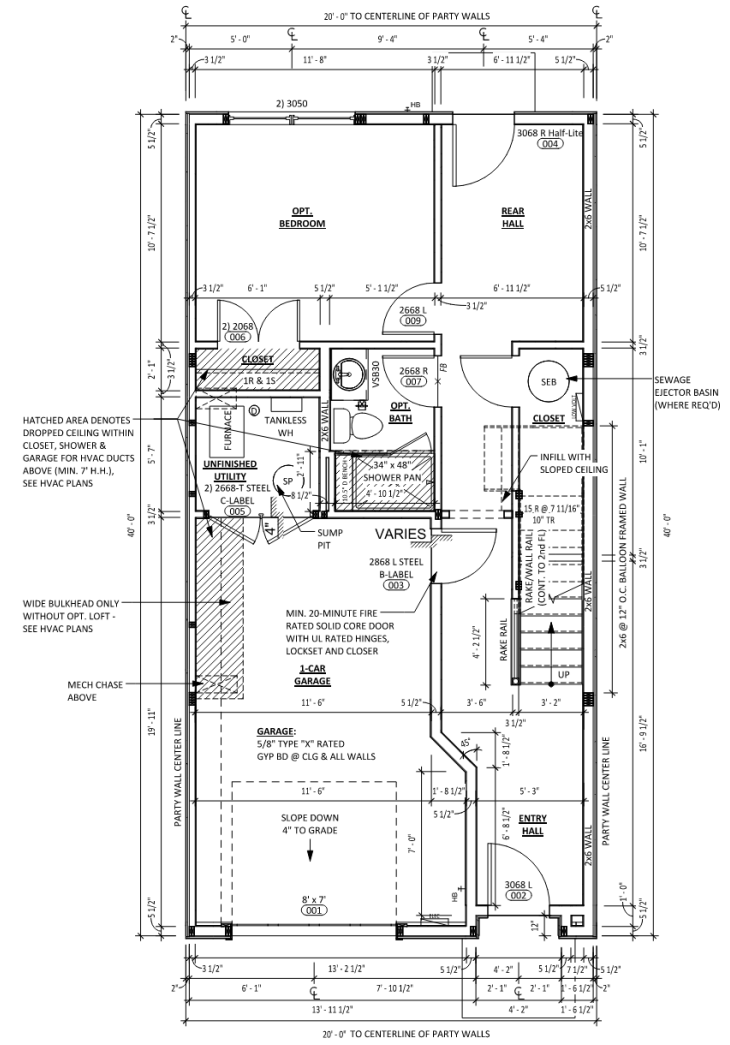
FIRST FLOOR PLAN OPTIONS FRONT LOAD



FIRST FLOOR PLAN OPTIONS FRONT LOAD

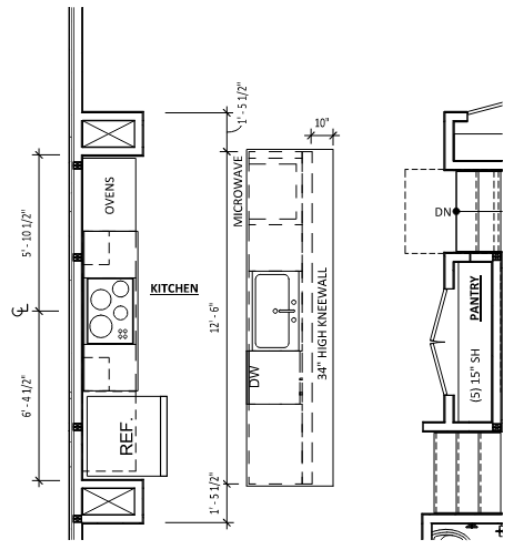


FIRST FLOOR PLAN -
1 | STD. REC ROOM WITH OPT. FULL BATH
A-0.1 1/4" = 1'-0"

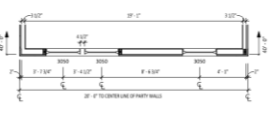


FIRST FLOOR PLAN -
2 | WITH OPT. BEDROOM & FULL BATH
A-0.1 1/4" = 1'-0"

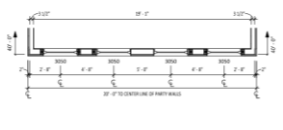
SECOND FLOOR PLAN OPTIONS FRONT LOAD



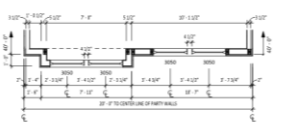
**MID-KITCHEN -
3 DESIGNER SELECT SPEC**
A-1.0 1/4" = 1'-0"



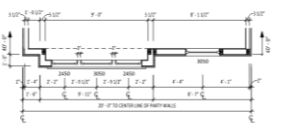
4 SECOND FLOOR PLAN - ELEV. "2", "3" & "5"
A-1.0 1/4" = 1'-0"



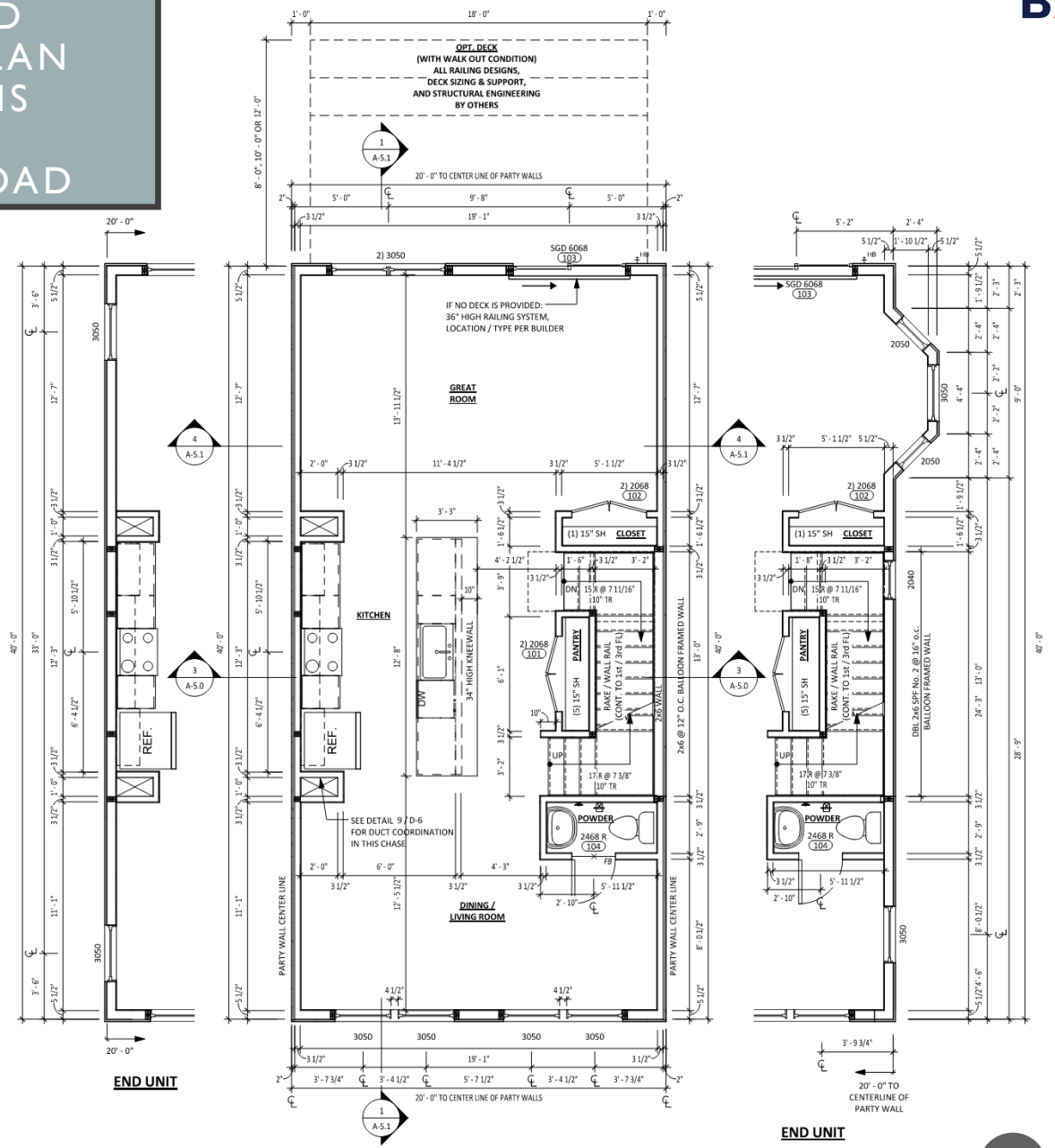
5 SECOND FLOOR PLAN - ELEV. "4"
A-1.0 1/4" = 1'-0"



6 SECOND FLOOR PLAN - ELEV. "6"
A-1.0 1/4" = 1'-0"

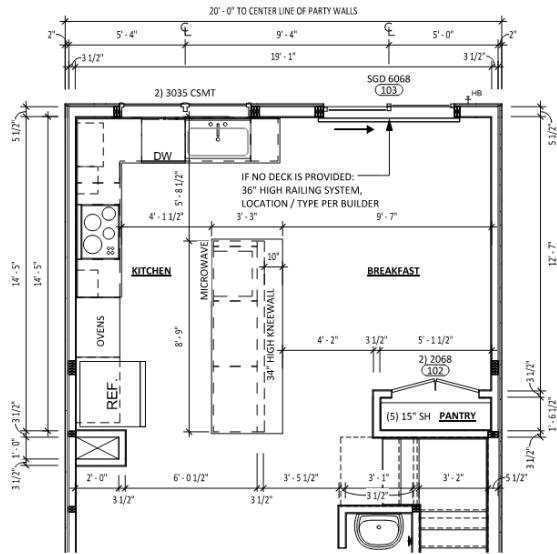


7 SECOND FLOOR PLAN - ELEV. "7"
A-1.0 1/4" = 1'-0"

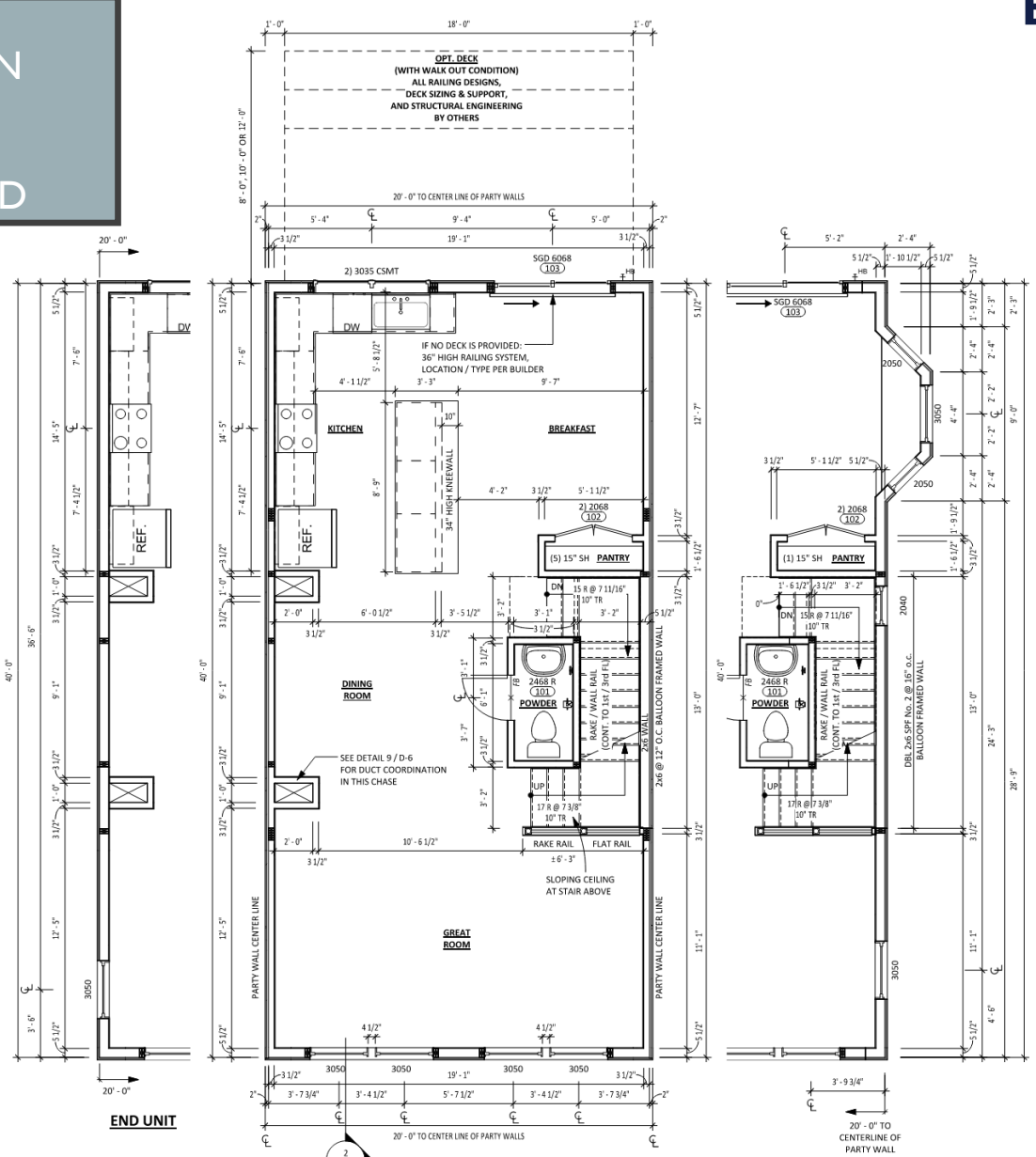


**1 SECOND FLOOR PLAN - WITH MID-KITCHEN LAYOUT
(SHOWN W/ ELEV. "1")**
A-1.0 1/4" = 1'-0"

SECOND FLOOR PLAN OPTIONS FRONT LOAD



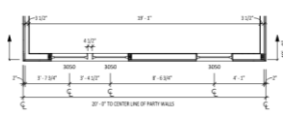
**OPT. REAR KITCHEN -
2 | DESIGNER SELECT SPEC**
A-1.1 1/4" = 1'-0"



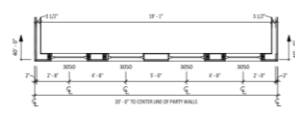
END UNIT

END UNIT

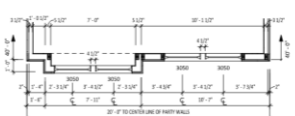
1 | SECOND FLOOR PLAN - WITH OPT. REAR KITCHEN LAYOUT (SHOWN WITH ELEV. "1")
A-1.1 1/4" = 1'-0"



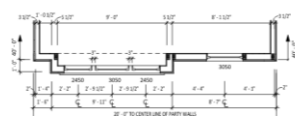
3 | SECOND FLOOR PLAN - ELEV. "2", "3" & "5"
A-1.1 1/4" = 1'-0"



4 | SECOND FLOOR PLAN - ELEV. "4"
A-1.1 1/4" = 1'-0"

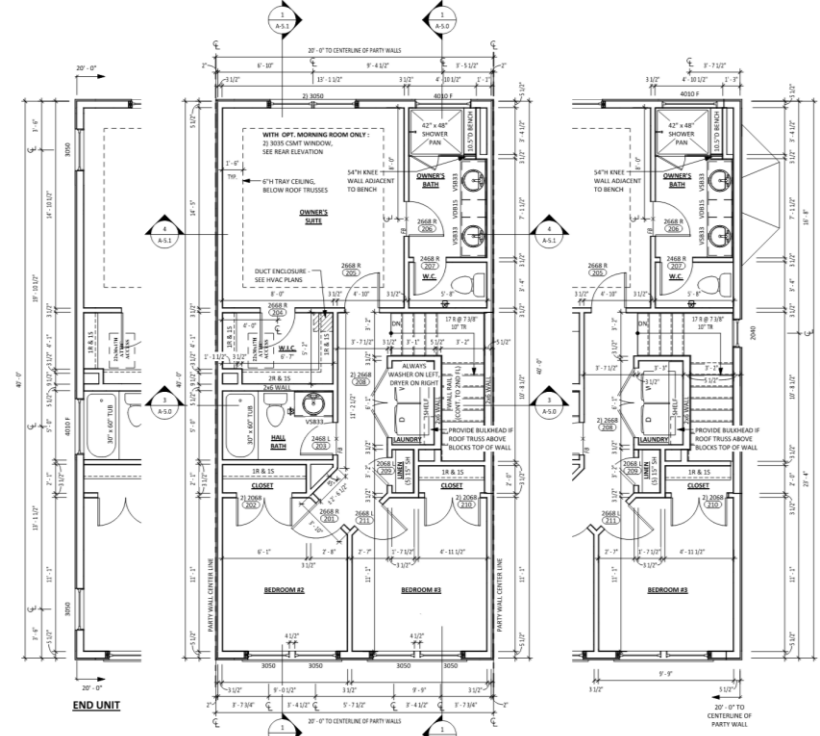


5 | SECOND FLOOR PLAN - ELEV. "6"
A-1.1 1/4" = 1'-0"

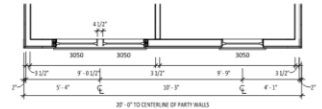


6 | SECOND FLOOR PLAN - ELEV. "7"
A-1.1 1/4" = 1'-0"

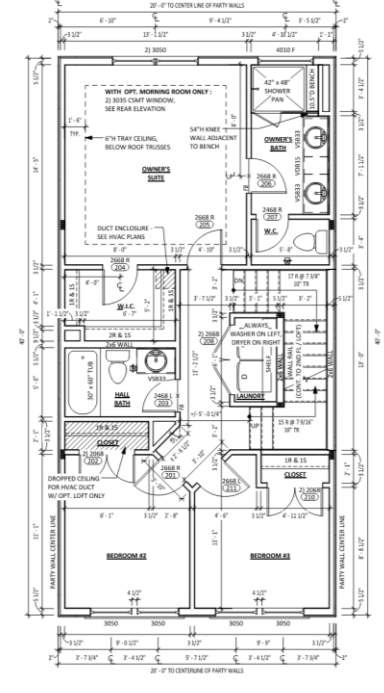
THIRD FLOOR PLAN OPTIONS FRONT LOAD



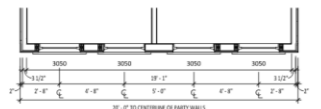
1 | THIRD FLOOR PLAN - (SHOWN WITH ELEV. "1", "3", "6", "7")
A-2.0 | 1/4" = 1'-0"



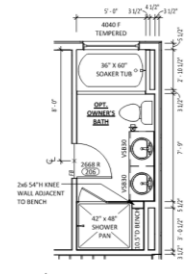
4 | THIRD FLOOR PLAN - ELEV. "2" & "5"
A-2.0 | 1/4" = 1'-0"



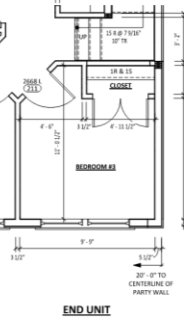
2 | THIRD FLOOR PLAN - (WITH OPT. LOFT ABOVE)
A-2.0 | 1/4" = 1'-0"



5 | THIRD FLOOR PLAN - ELEV. "4"
A-2.0 | 1/4" = 1'-0"

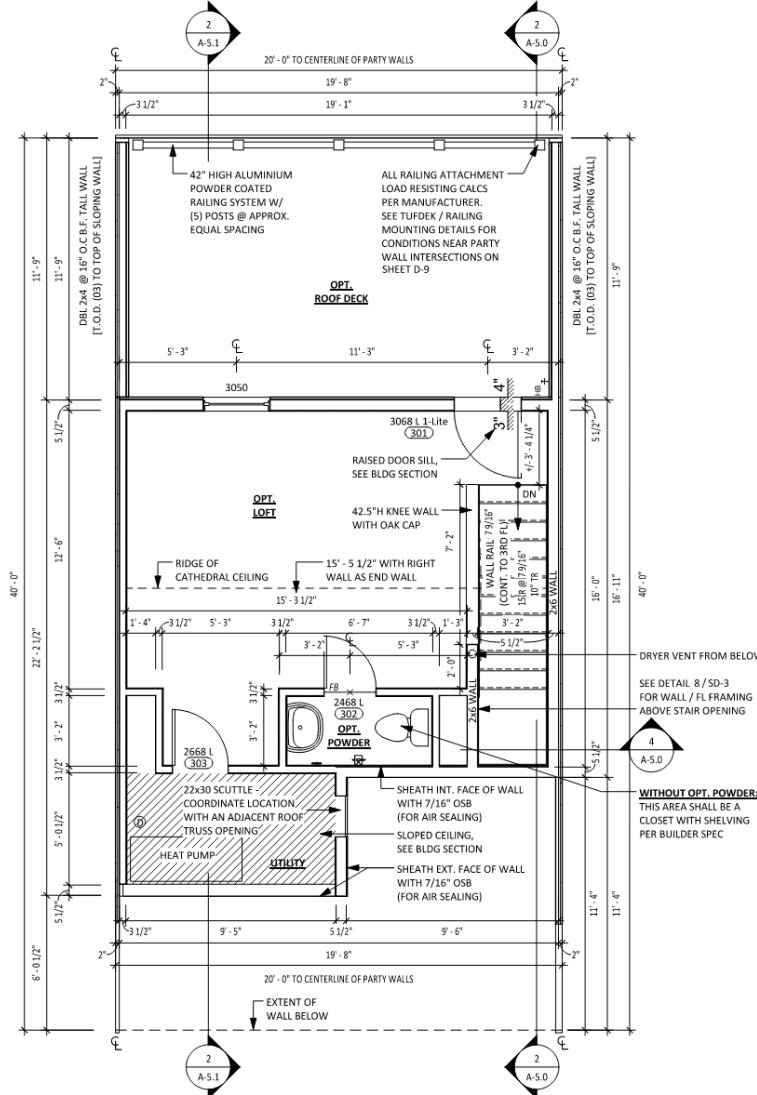


6 | OPT. OWNER'S BATH
A-2.0 | 1/4" = 1'-0"

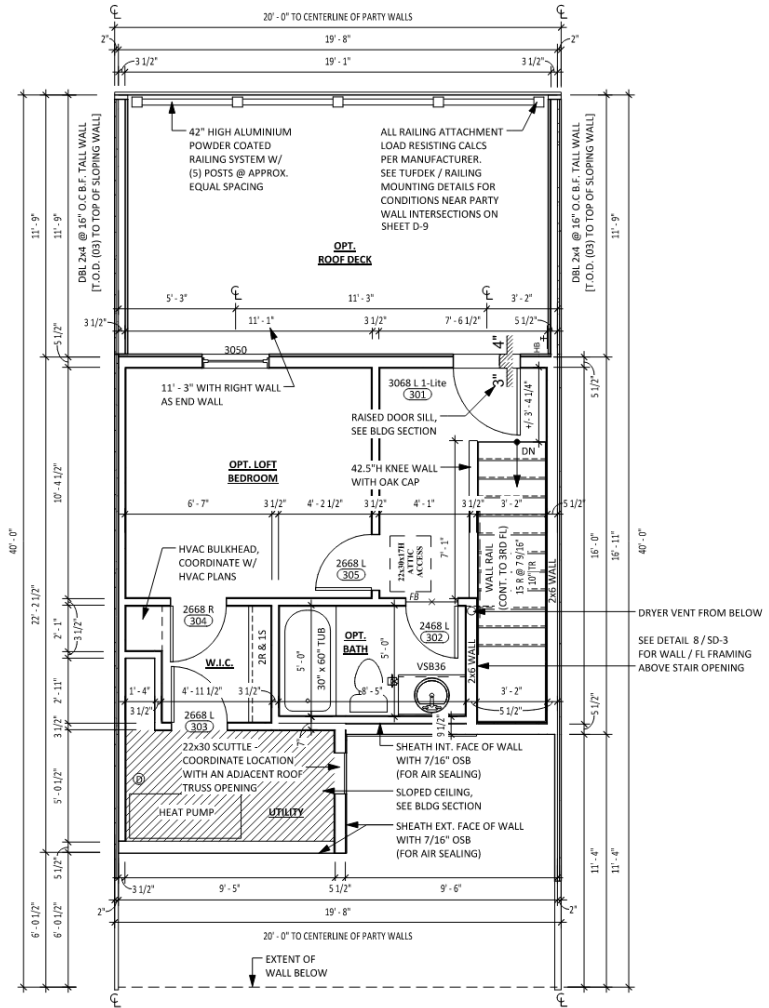


END UNIT

OPTIONAL LOFT FLOOR PLAN OPTIONS FRONT LOAD



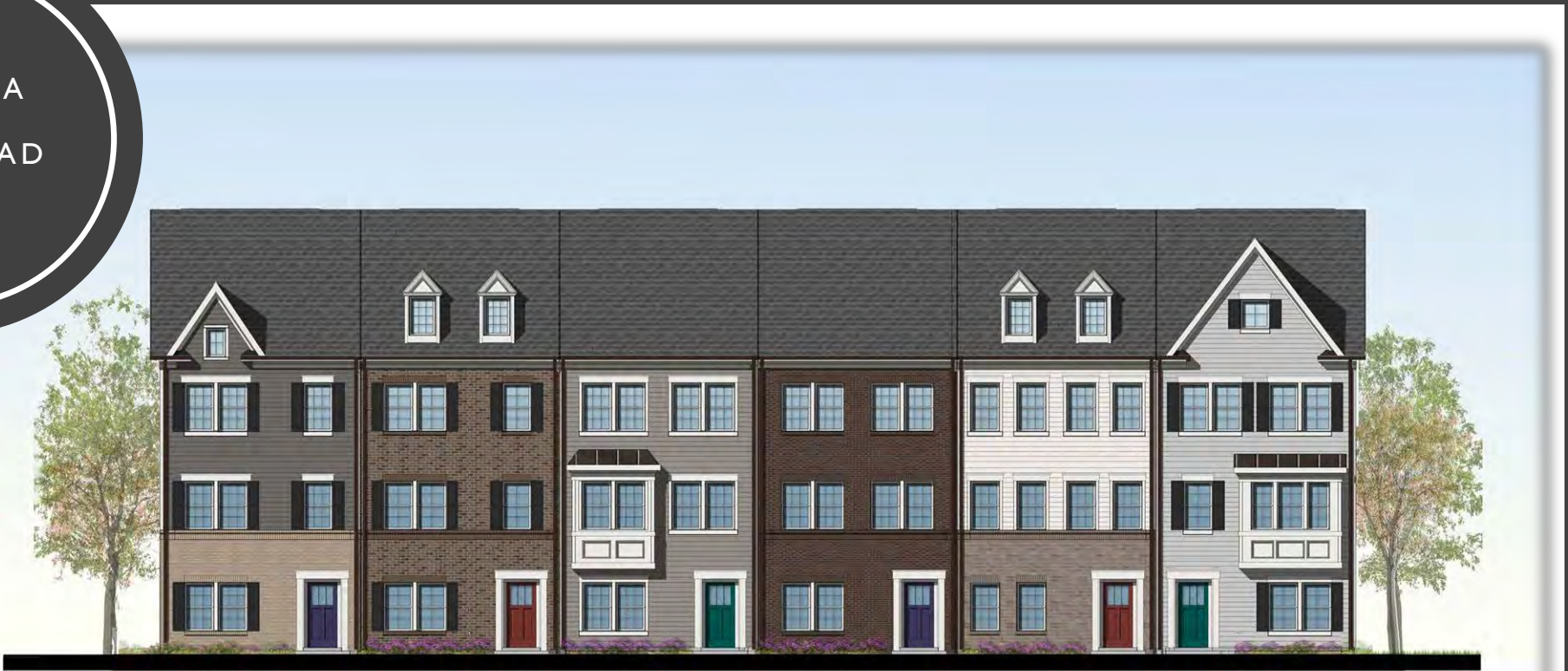
1 | OPT. OPEN LOFT PLAN
A-3.0 1/4" = 1'-0"



2 | OPT. LOFT BEDROOM PLAN
A-3.0 1/4" = 1'-0"

ARCADIA 20' REAR LOAD UNIT

ARCADIA
REAR LOAD
UNIT



LOT 1
ARCADIA - REVERSE
BRICK: CHESAPEAKE
SIDING: AGELESS SLATE
DOOR: DEWBERRY (SW 6552)

LOT 2
ARCADIA - STANDARD
BRICK: ROCKVIEW
SIDING: MIDNIGHT BLUE
DOOR: CRABBY APPLE (SW 7592)

LOT 3
ARCADIA - STANDARD
SIDING: TUSCAN CLAY
DOOR: CAPE VERDE (SW 6482)

LOT 4
ARCADIA - STANDARD
BRICK: ASHFIELD
SIDING: PLATINUM GRAY
DOOR: DEWBERRY (SW 6552)

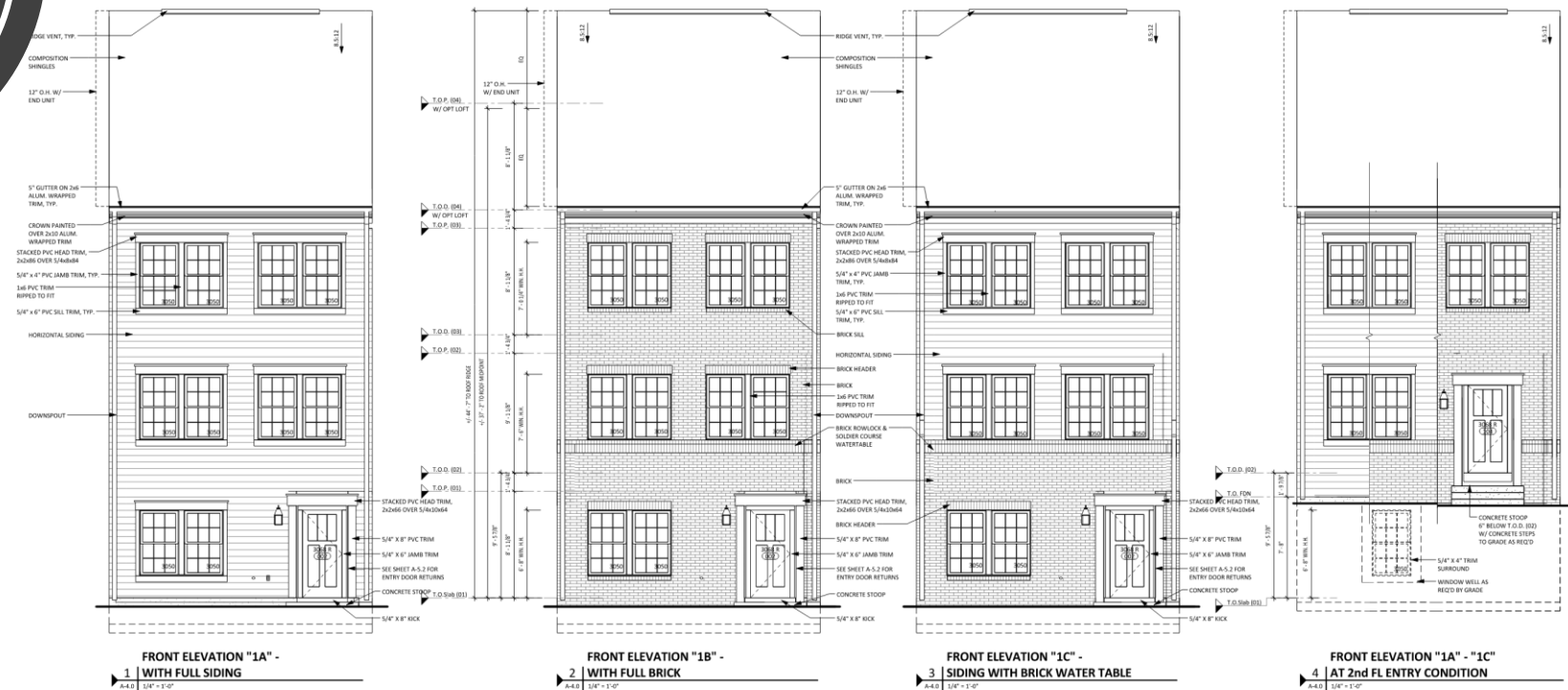
LOT 5
ARCADIA STANDARD
BRICK: SILVERVIEW
SIDING: GLACIER WHITE
DOOR: CRABBY APPLE (SW 7592)

LOT 6
ARCADIA - STANDARD
SIDING: PLATINUM GRAY
SHUTTER: BLACK (002)
DOOR: CAPE VERDE (SW 6482)

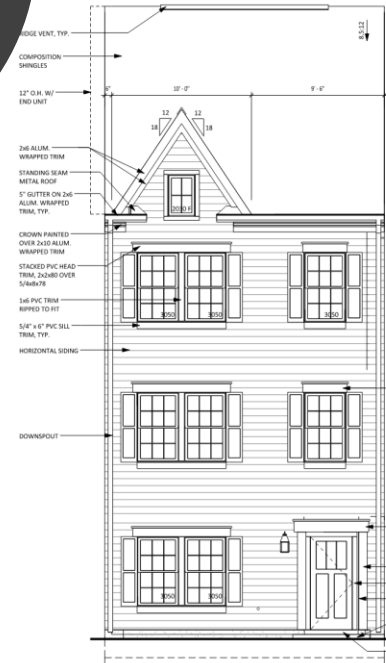
SAMPLE STRIP ELEVATION - ARCADIA RL MODEL

BUILDING COLOR SCHEME:
ALL TRIM, WINDOWS, AND GARAGE DOORS TO BE WHITE
CHARCOAL STANDING SEAM METAL & SHINGLE ROOF

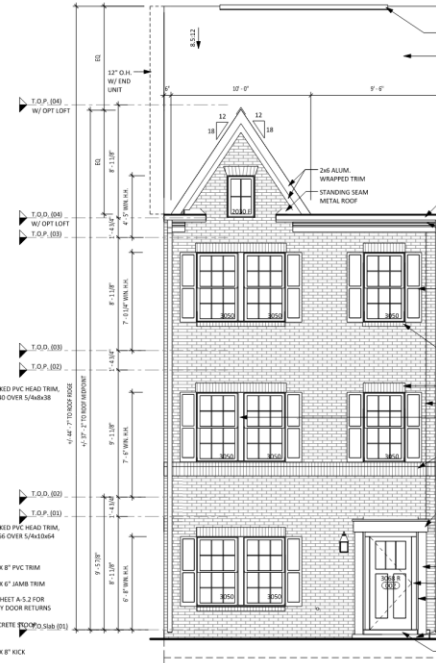
FRONT ELEVATION OPTIONS



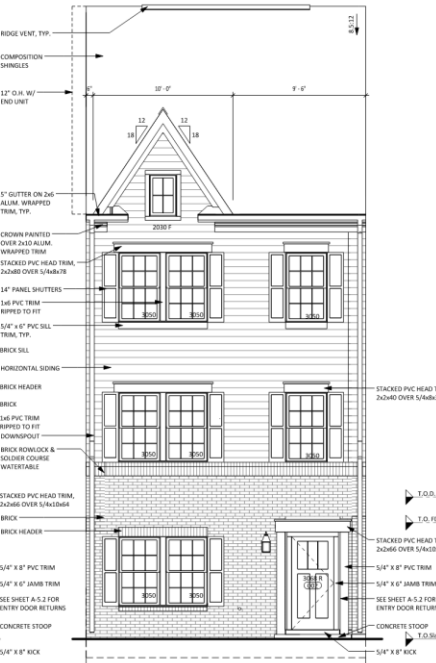
FRONT ELEVATION OPTIONS



FRONT ELEVATION "2A" -
1 WITH FULL SIDING
A-4.1 1/4" = 1'-0"



FRONT ELEVATION "2B" -
2 WITH FULL BRICK
A-4.1 1/4" = 1'-0"

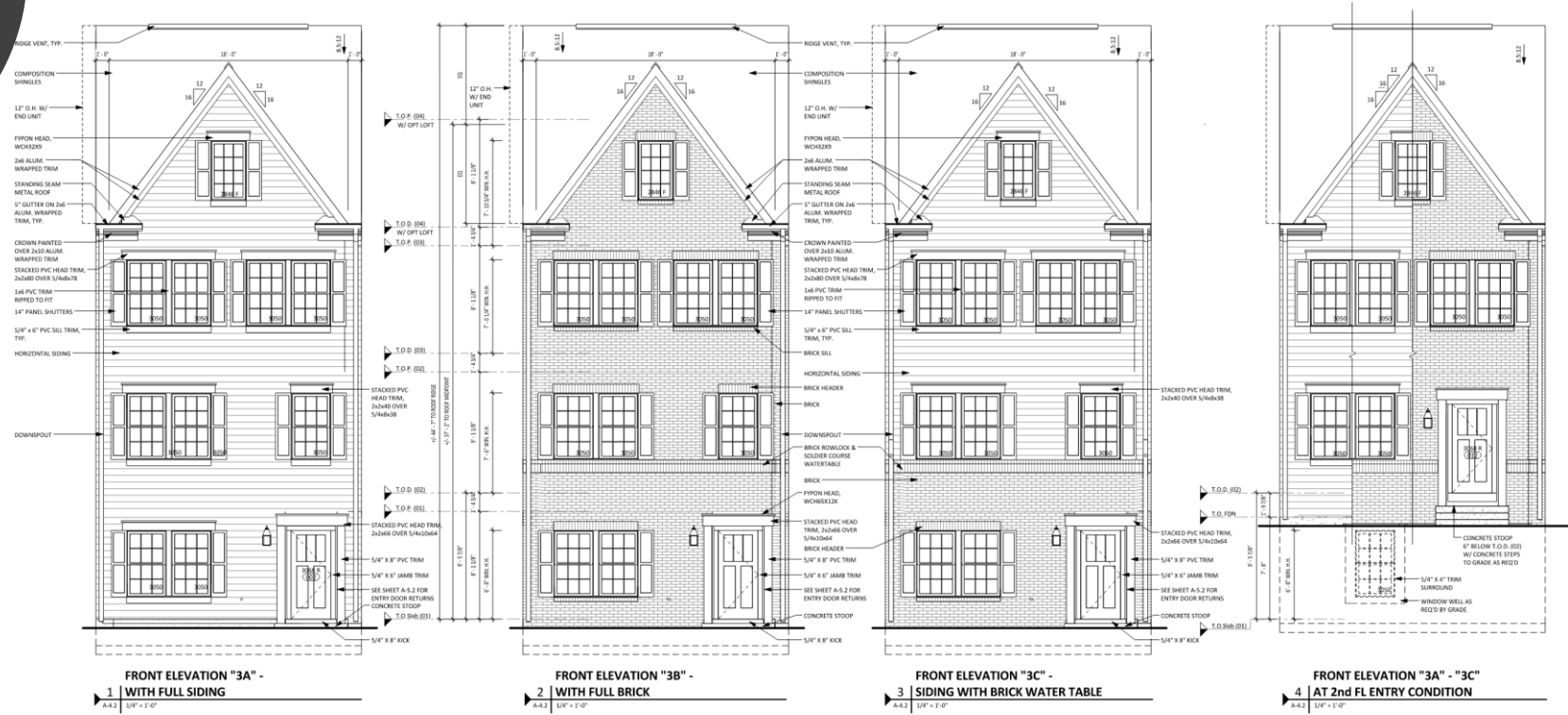


FRONT ELEVATION "2C" -
3 SIDING WITH BRICK WATER TABLE
A-4.1 1/4" = 1'-0"

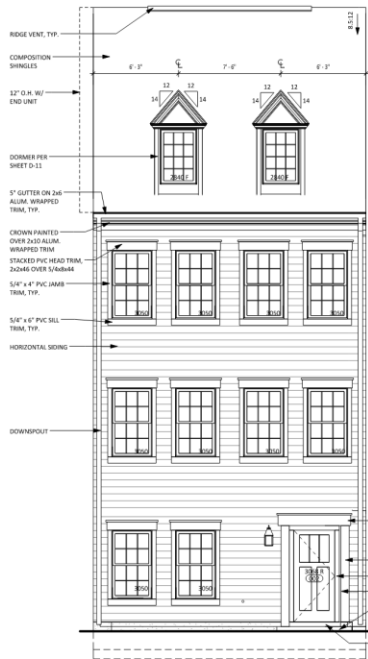


FRONT ELEVATION "2A" - "2C"
4 AT 2nd FL ENTRY CONDITION
A-4.1 1/4" = 1'-0"

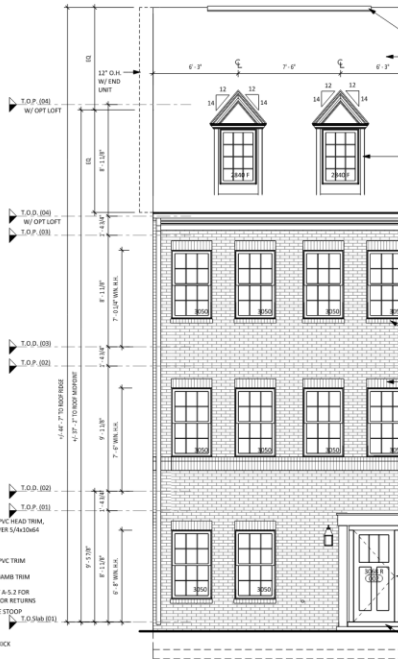
FRONT ELEVATION OPTIONS



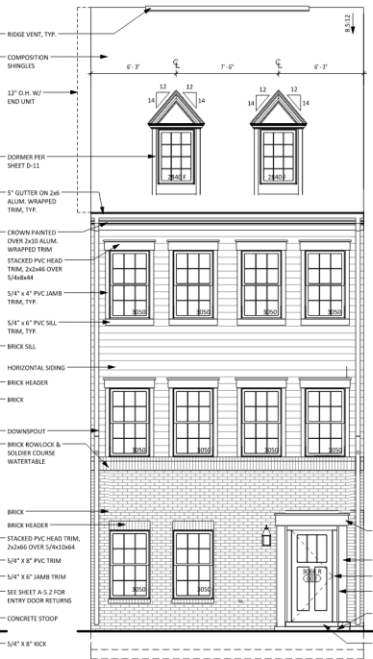
FRONT ELEVATION OPTIONS



FRONT ELEVATION "4A" - WITH FULL SIDING
A-4.3 N.T.S.



FRONT ELEVATION "4B" - WITH FULL BRICK
A-4.3 1/4" = 1'-0"

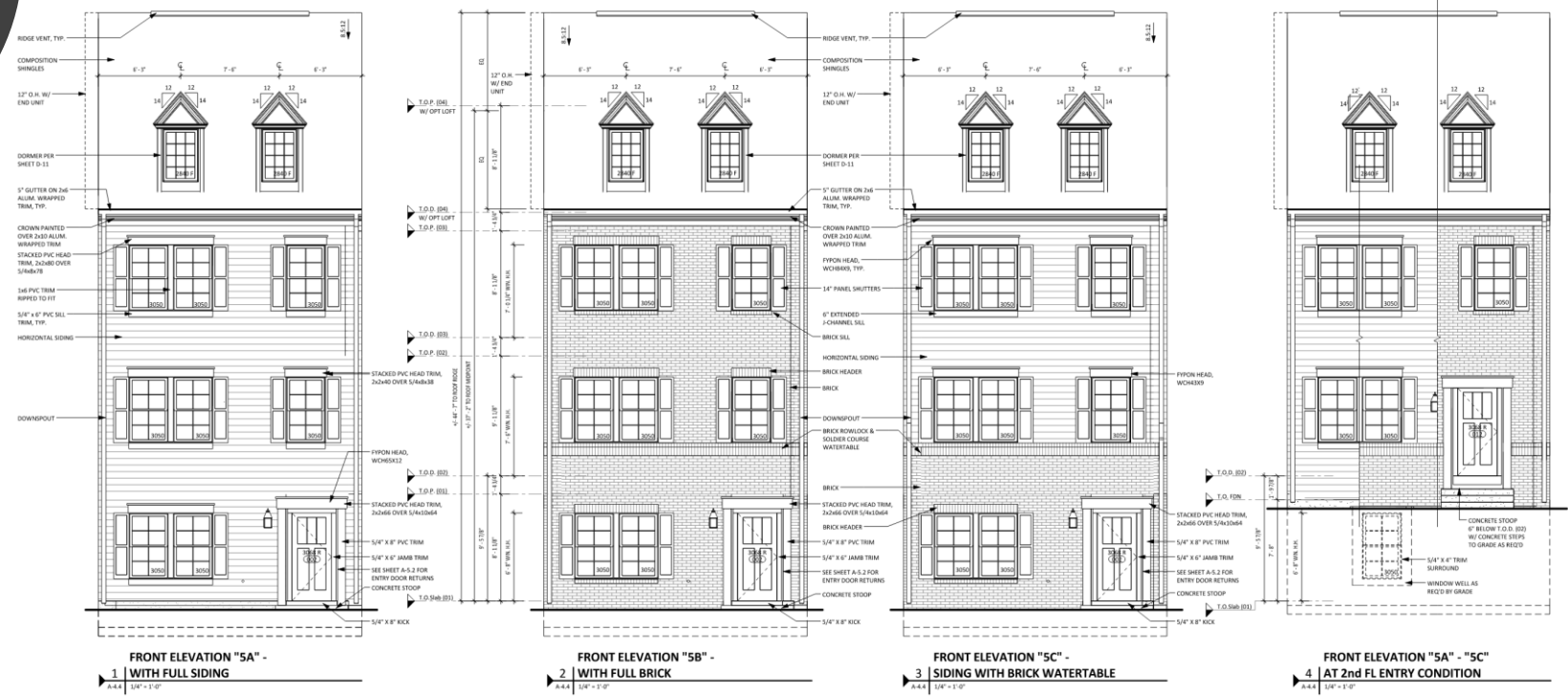


FRONT ELEVATION "4C" - SIDING WITH BRICK WATERTABLE
A-4.3 1/4" = 1'-0"

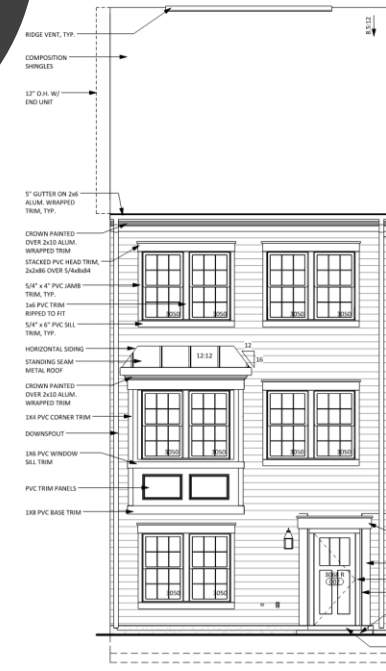


FRONT ELEVATION "4A" - "4C" AT 2nd FL ENTRY CONDITION
A-4.3 1/4" = 1'-0"

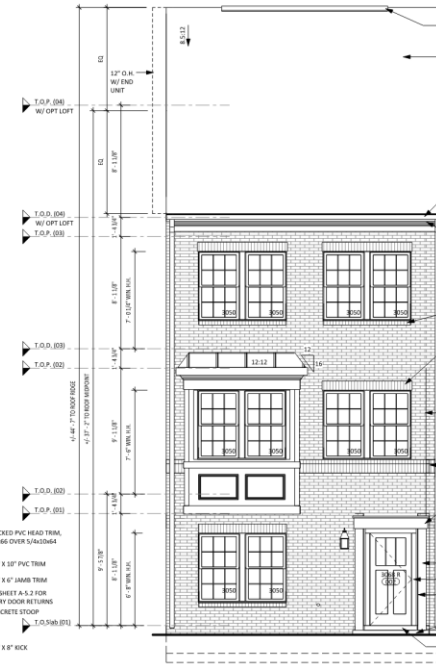
FRONT ELEVATION OPTIONS



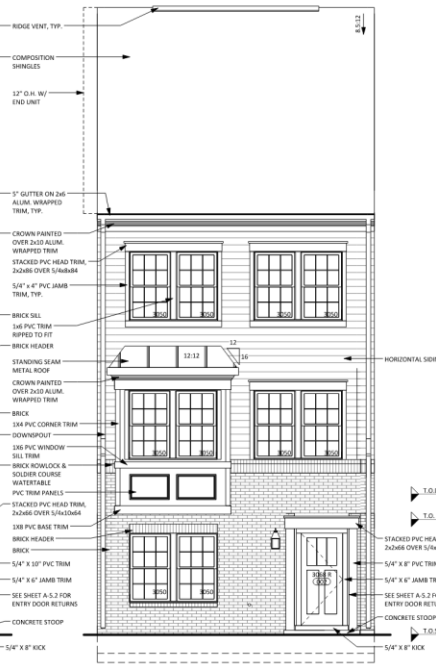
FRONT ELEVATION OPTIONS



FRONT ELEVATION "6A" -
1 WITH FULL SIDING
A4.3 1/4" = 1'-0"



FRONT ELEVATION "6B" -
2 WITH FULL BRICK
A4.3 1/4" = 1'-0"



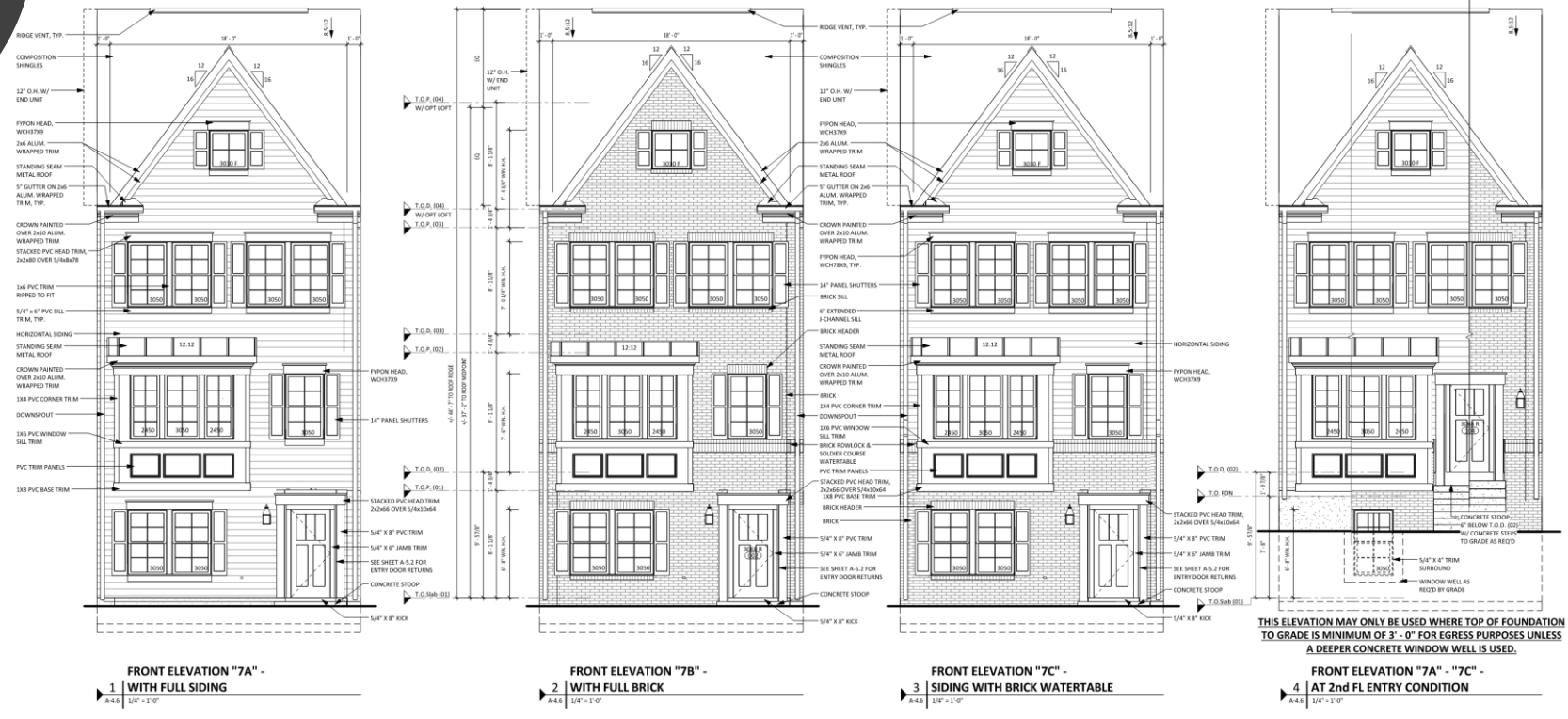
FRONT ELEVATION "6C" -
3 SIDING WITH BRICK WATERTABLE
A4.3 1/4" = 1'-0"



FRONT ELEVATION "6A" - "6C"
4 AT 2nd FL ENTRY CONDITION
A4.3 1/4" = 1'-0"

THIS ELEVATION MAY ONLY BE USED WHERE TOP OF FOUNDATION TO GRADE IS MINIMUM OF 3' - 0" FOR EGRESS PURPOSES UNLESS A DEEPER CONCRETE WINDOW WELL IS USED.

FRONT ELEVATION OPTIONS



THIS ELEVATION MAY ONLY BE USED WHERE TOP OF FOUNDATION TO GRADE IS MINIMUM OF 3'-0" FOR EGRESS PURPOSES UNLESS A DEEPER CONCRETE WINDOW WELL IS USED.

ARCADIA
REAR LOAD
UNIT



LOT 6
ARCADIA - STANDARD
SIDING: PLATINUM GRAY
SHUTTER: BLACK (002)
DOOR: CAPE VERDE (SW 6482)

LOT 5
ARCADIA STANDARD
BRICK: SILVERVIEW
SIDING: GLACIER WHITE
DOOR: CRABBY APPLE (SW 7582)

LOT 4
ARCADIA - STANDARD
BRICK: ASHFIELD
SIDING: PLATINUM GRAY
DOOR: DEWBERRY (SW 8552)

LOT 3
ARCADIA - STANDARD
SIDING: TUSCAN CLAY
DOOR: CAPE VERDE (SW 6482)

LOT 2
ARCADIA - STANDARD
BRICK: ROCKVIEW
SIDING: MIDNIGHT BLUE
DOOR: CRABBY APPLE (SW 7582)

LOT 1
ARCADIA - REVERSE
BRICK: CHESAPEAKE
SIDING: AGELESS SLATE
DOOR: DEWBERRY (SW 8552)

SAMPLE STRIP ELEVATION - ARCADIA RL MODEL

BUILDING COLOR SCHEME:
ALL TRIM, WINDOWS, AND GARAGE DOORS TO BE WHITE
CHARCOAL STANDING SEAM METAL & SHINGLE ROOF

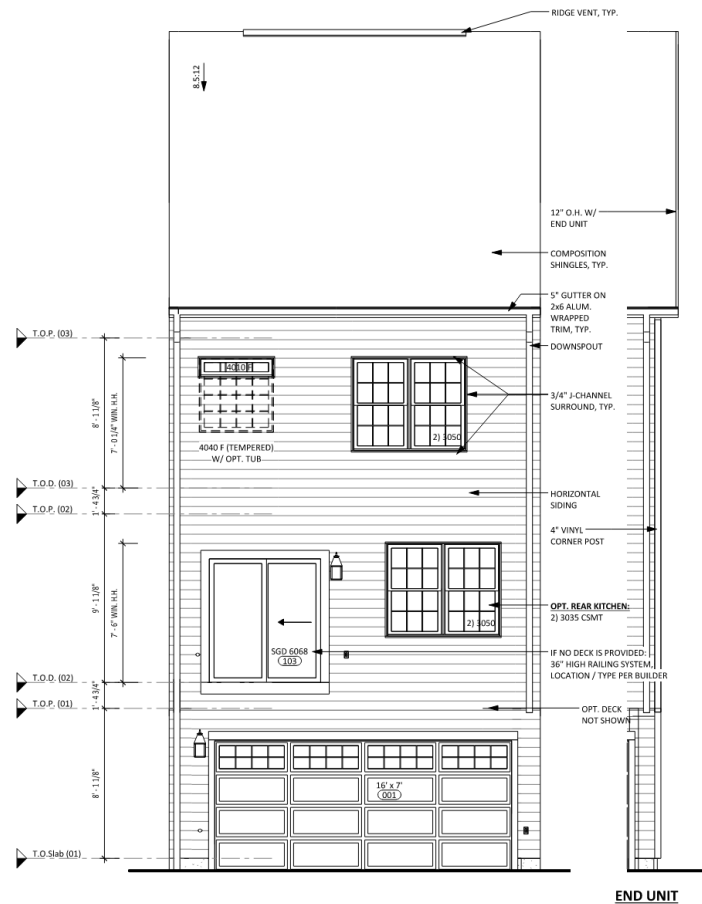


Architecture + Planning
888.456.5849
ktgy.com

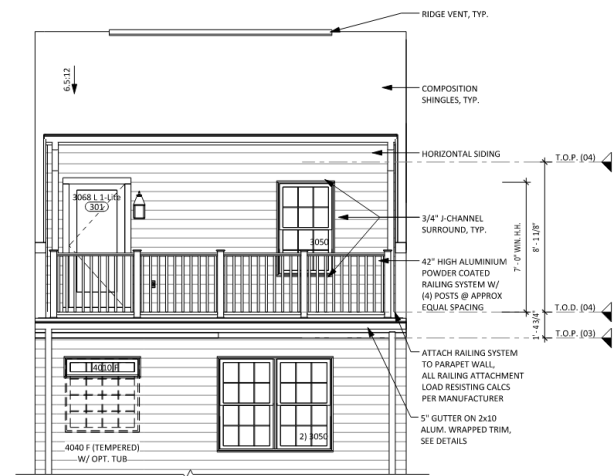


The Home of Everything's Included!

REAR ELEVATION OPTIONS



1 REAR ELEVATION
A-4.7 1/4" = 1'-0"



2 REAR ELEVATION WITH OPT. LOFT -
(OPEN LOFT OR OPT. BEDROOM)
A-4.7 1/4" = 1'-0"

ARCADIA
REAR LOAD
UNIT



LOT 1
ARCADIA - REVERSE
BRICK: CHESAPEAKE
SIDING: AGELESS SLATE
DOOR: DEWBERRY (SW 6552)

SAMPLE STRIP ELEVATION - ARCADIA RL MODEL

BUILDING COLOR SCHEME:
ALL TRIM, WINDOWS, AND GARAGE DOORS TO BE WHITE
CHARCOAL STANDING SEAM METAL & SHINGLE ROOF

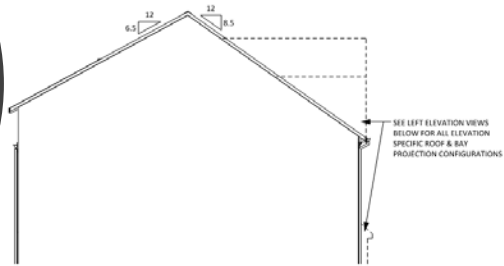


LOT 6
ARCADIA - STANDARD
SIDING: PLATINUM GRAY
SHUTTER: BLACK (002)
DOOR: CAPE VERDE (SW 6482)

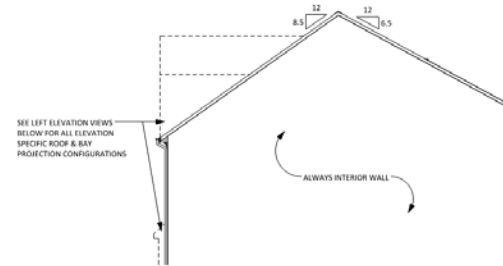
SAMPLE STRIP ELEVATION - ARCADIA RL MODEL

BUILDING COLOR SCHEME:
ALL TRIM, WINDOWS, AND GARAGE DOORS TO BE WHITE
CHARCOAL STANDING SEAM METAL & SHINGLE ROOF

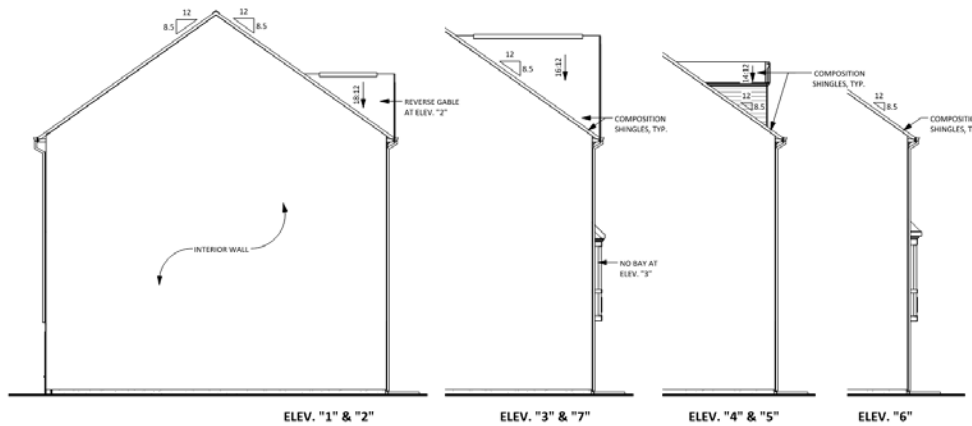
ELEVATION OPTIONS



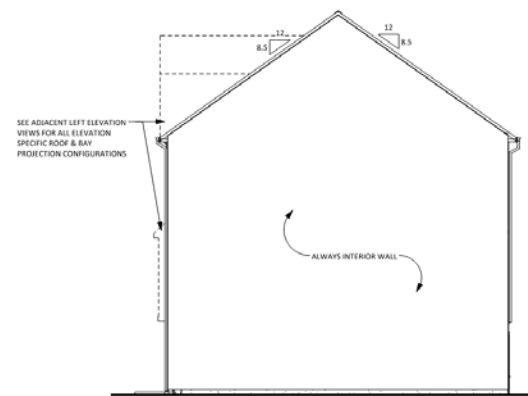
3 | LEFT ELEVATION WITH OPT. LOFT
(SHOWN W/ INTERIOR UNIT CONDITION)
A-4.8 | 1/8" = 1'-0"



4 | RIGHT ELEVATION WITH OPT. LOFT
(SHOWN W/ INTERIOR UNIT CONDITION)
A-4.8 | 1/8" = 1'-0"

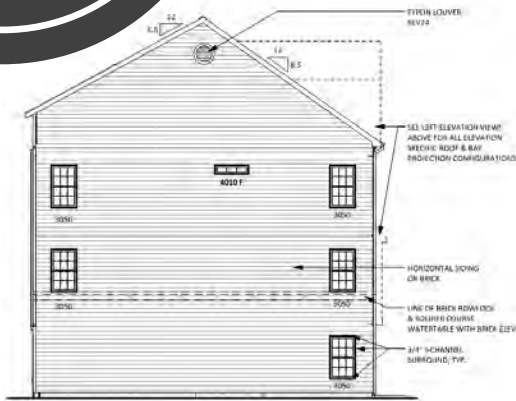


1 | LEFT ELEVATION
(SHOWN W/ INTERIOR UNIT CONDITION)
A-4.8 | 1/8" = 1'-0"

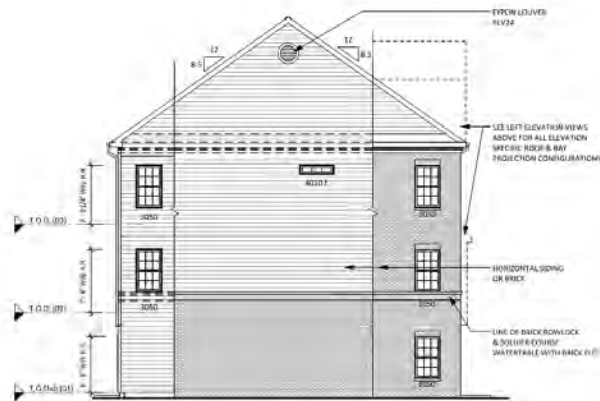


2 | RIGHT ELEVATION
(SHOWN W/ INTERIOR UNIT CONDITION)
A-4.8 | 1/8" = 1'-0"

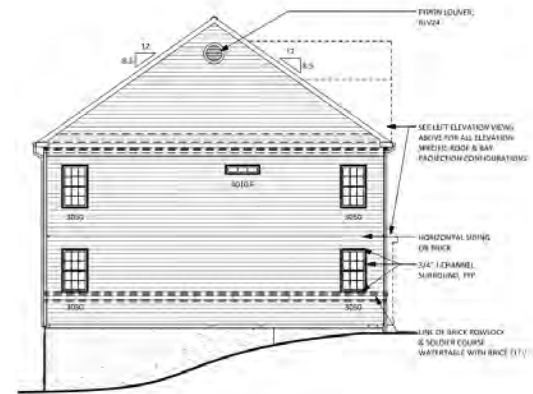
ELEVATION OPTIONS



5 | LEFT ELEVATION WITH OPT. LOFT
A-48 | 1/8" = 1'-0"

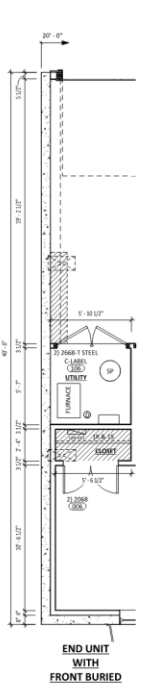


6 | LEFT ELEVATION WITHOUT OPT. LOFT
A-48 | 1/8" = 1'-0"

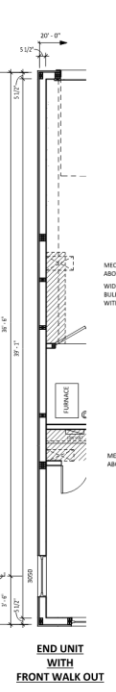


7 | LEFT ELEVATION - (END UNIT BURIED AT FRONT)
A-48 | 1/8" = 1'-0"

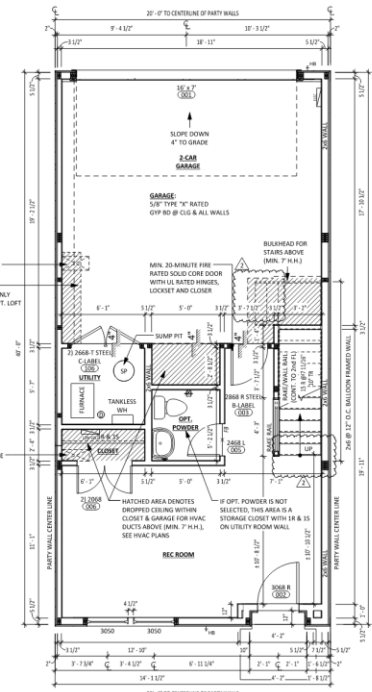
FIRST FLOOR PLAN OPTIONS REAR LOAD



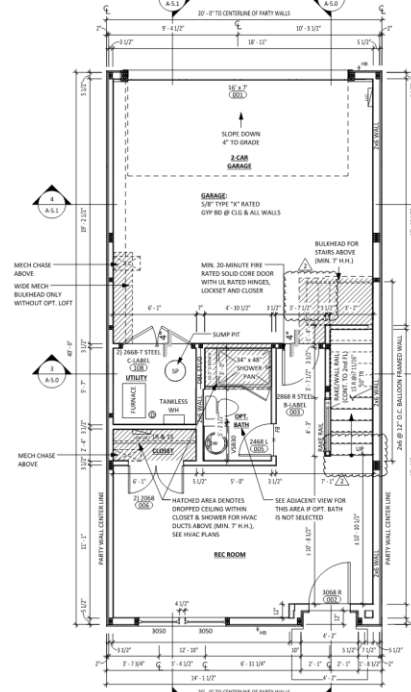
END UNIT WITH FRONT BURIED



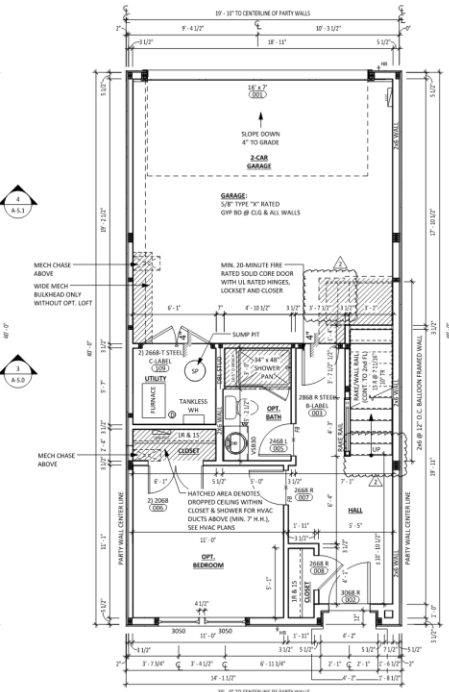
END UNIT WITH FRONT WALK OUT



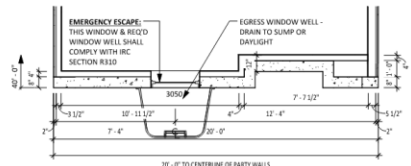
1 | FIRST FLOOR PLAN - REC ROOM WITH POWDER (ALL ELEV. EXCEPT "4")



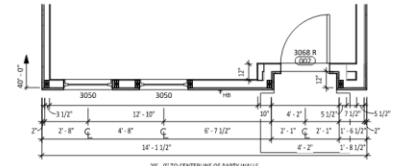
2 | FIRST FLOOR PLAN - REC ROOM WITH OPT. FULL BATH (ALL ELEV. EXCEPT "4")



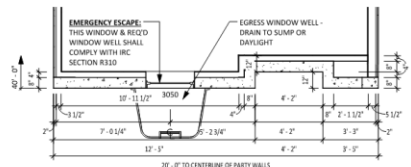
3 | FIRST FLOOR PLAN - WITH OPT. BEDROOM & FULL BATH (ALL ELEV. EXCEPT "4")



5 | FIRST FLOOR PLAN - ELEV. "4" FRONT BURIED CONDITION

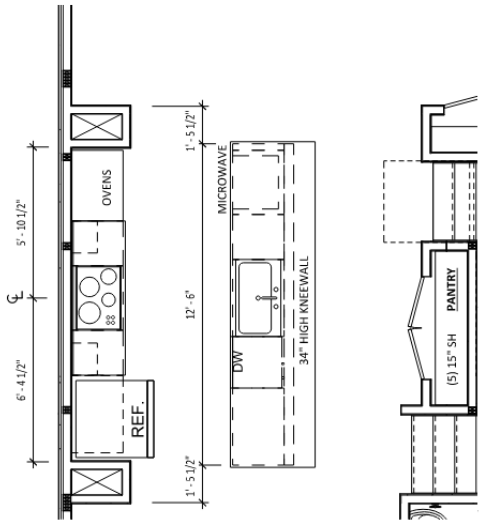


6 | FIRST FLOOR PLAN - ELEV. "4" (ALL ELEV. EXCEPT "4")

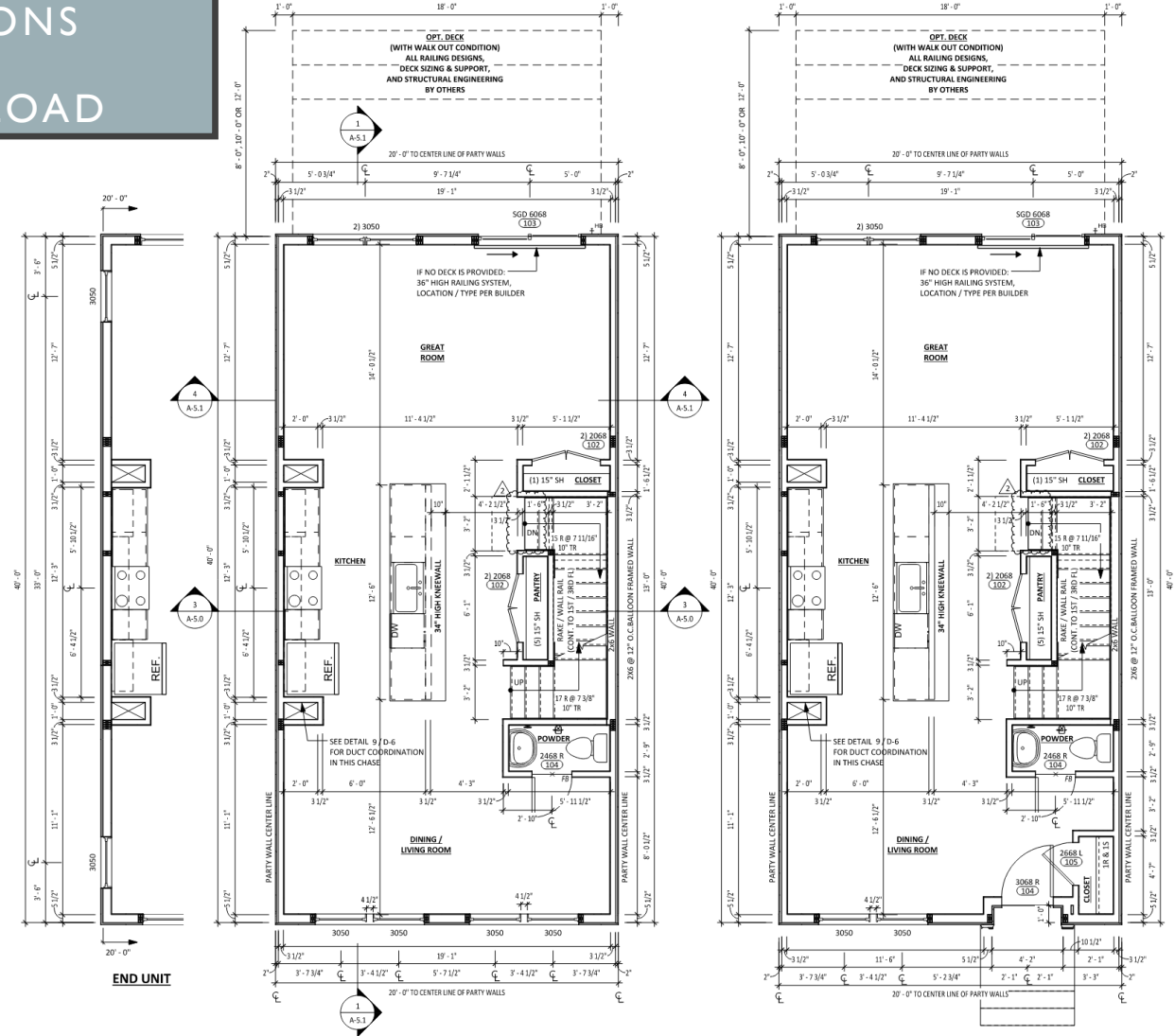
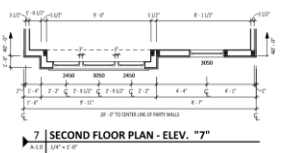
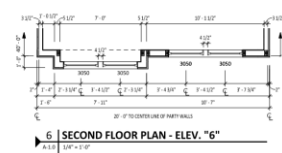
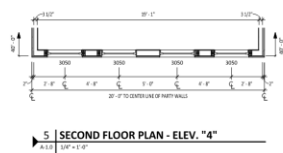
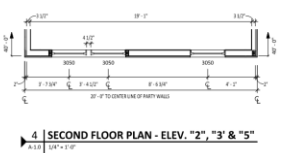


7 | FIRST FLOOR PLAN - ALL NON-ELEV. "4" FRONT BURIED CONDITION

SECOND FLOOR PLAN OPTIONS REAR LOAD



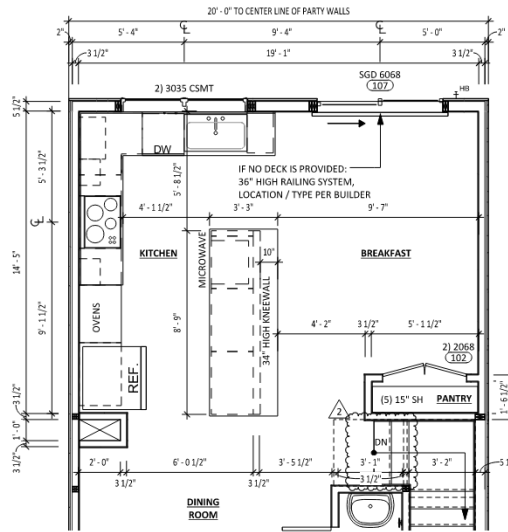
**MID-KITCHEN -
3 DESIGNER SELECT SPEC**
A-1.0 1/4" = 1'-0"



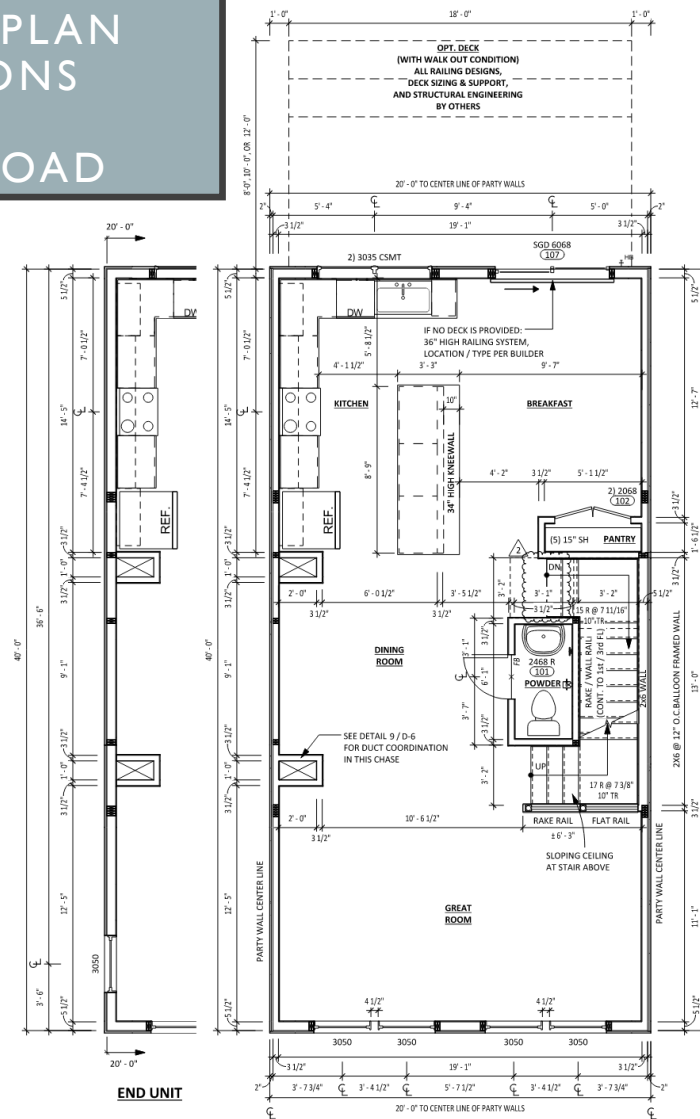
**SECOND FLOOR PLAN - WITH STD MID-KITCHEN
1 (SHOWN W/ ELEV. "1")**
A-1.0 1/4" = 1'-0"

**2ND FLOOR PLAN - WITH STD MID-KITCHEN
2 WITH 2ND FL ENTRY (SHOWN W/ ELEV. "1")**
A-1.0 1/4" = 1'-0"

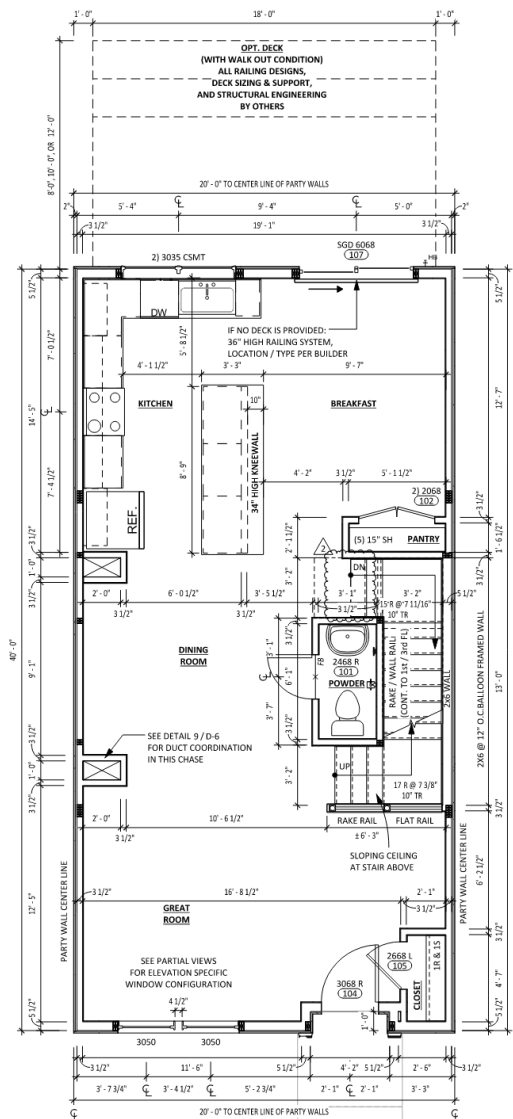
SECOND FLOOR PLAN OPTIONS REAR LOAD



OPT. REAR KITCHEN -
3 DESIGNER SELECT SPEC
A-1.1 1/4" = 1'-0"



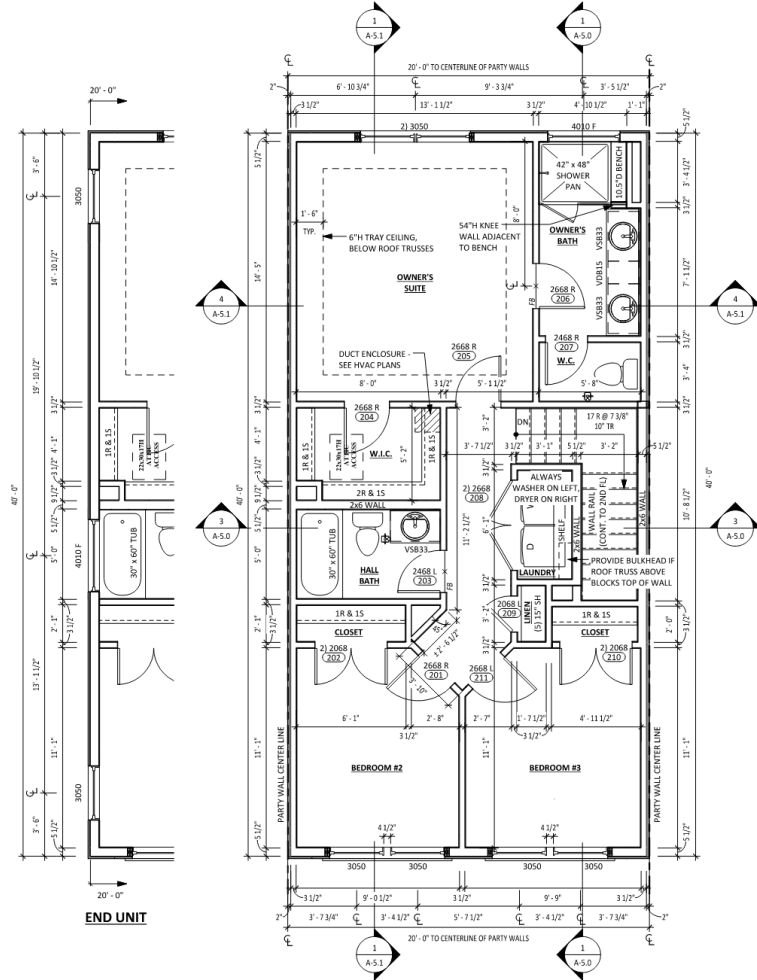
SECOND FLOOR PLAN - WITH OPT. REAR KITCHEN
1 (SHOWN W/ ELEV. "1")
A-1.1 1/4" = 1'-0"



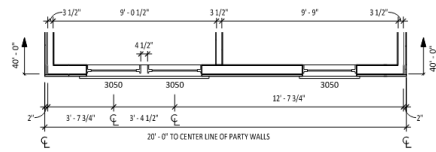
2ND FLOOR PLAN - WITH OPT. REAR KITCHEN
2 WITH 2ND FL ENTRY (SHOWN W/ ELEV. "1")
A-1.1 1/4" = 1'-0"

- 4 SECOND FLOOR PLAN - ELEV. "2", "3" & "5"
A-1.1 1/4" = 1'-0"
- 5 SECOND FLOOR PLAN - ELEV. "4"
A-1.1 1/4" = 1'-0"
- 6 SECOND FLOOR PLAN - ELEV. "6"
A-1.1 1/4" = 1'-0"
- 7 SECOND FLOOR PLAN - ELEV. "7"
A-1.1 1/4" = 1'-0"

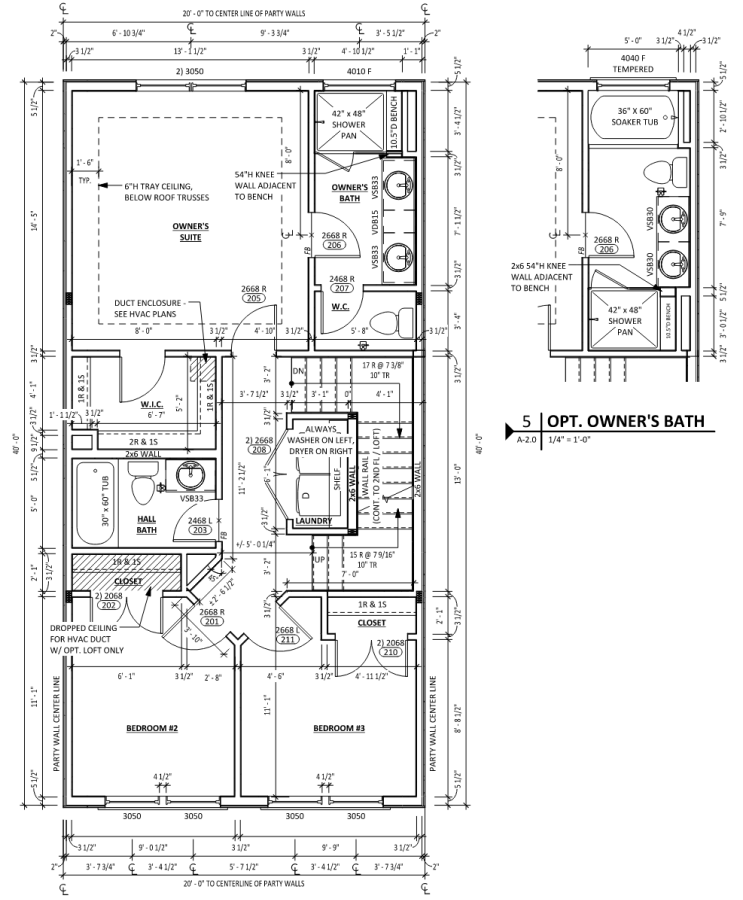
THIRD FLOOR PLAN OPTIONS REAR LOAD



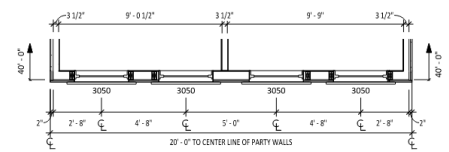
1 | THIRD FLOOR PLAN - (SHOWN W/ ELEV. "1", "3", "6", "7")
A-2.0 1/4" = 1'-0"



3 | THIRD FLOOR PLAN - ELEV. "2" & "5"
A-2.0 1/4" = 1'-0"



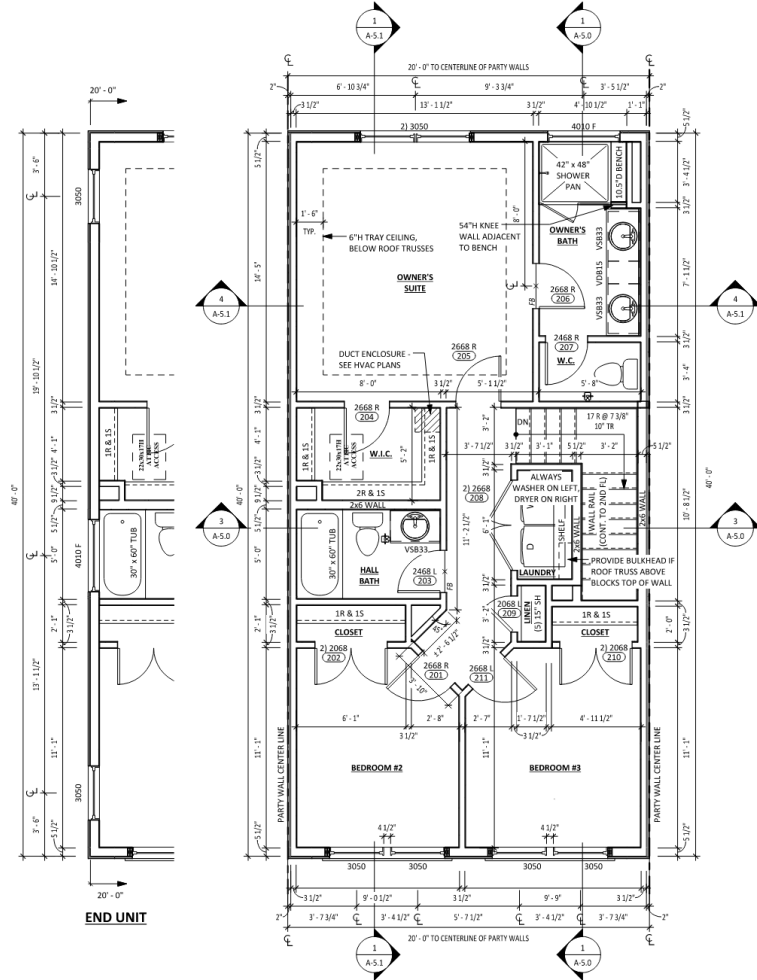
2 | THIRD FLOOR PLAN - (WITH OPT. LOFT ABOVE)
A-2.0 1/4" = 1'-0"



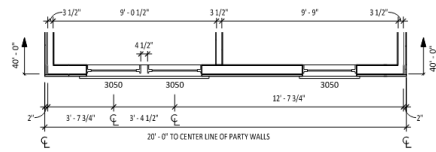
4 | THIRD FLOOR PLAN - ELEV. "4"
A-2.0 1/4" = 1'-0"

5 | OPT. OWNER'S BATH
A-2.0 1/4" = 1'-0"

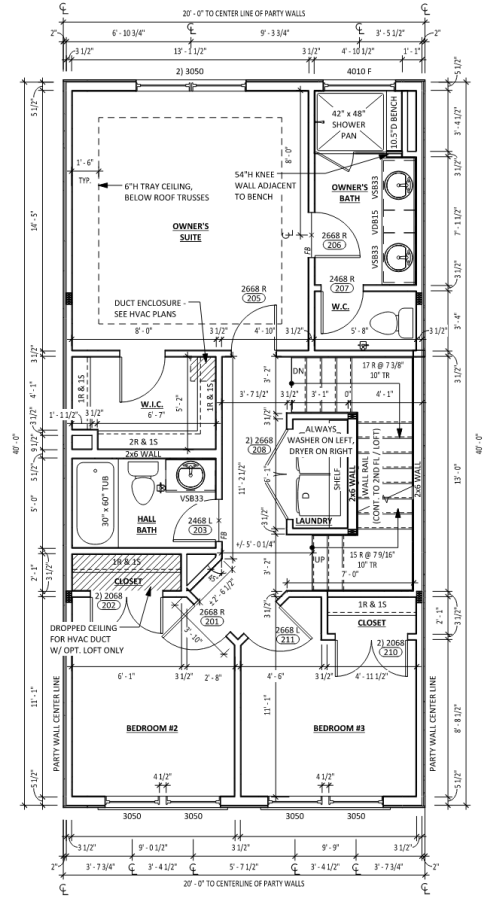
THIRD FLOOR PLAN OPTIONS REAR LOAD



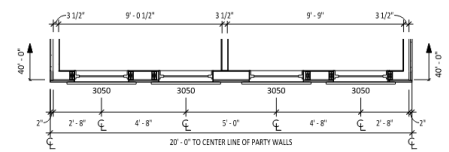
1 | THIRD FLOOR PLAN - (SHOWN W/ ELEV. "1", "3", "6", "7")
A-2.0 1/4" = 1'-0"



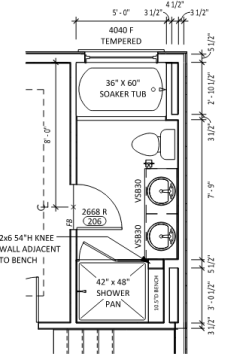
3 | THIRD FLOOR PLAN - ELEV. "2" & "5"
A-2.0 1/4" = 1'-0"



2 | THIRD FLOOR PLAN - (WITH OPT. LOFT ABOVE)
A-2.0 1/4" = 1'-0"

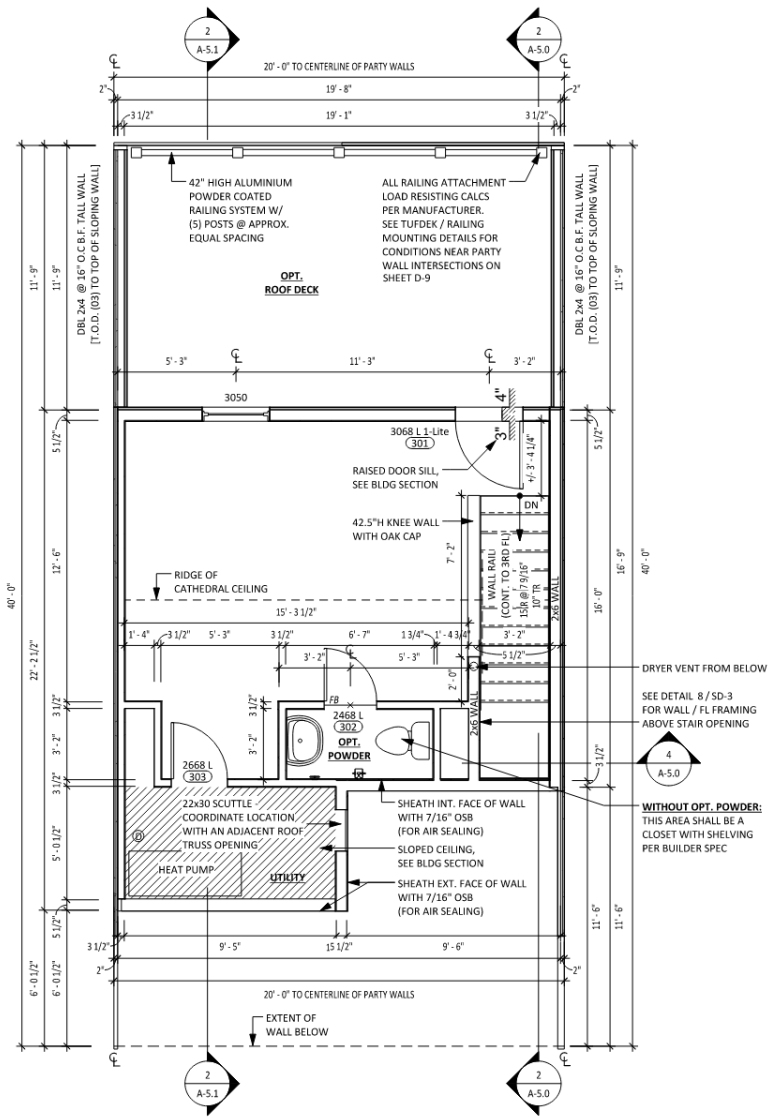


4 | THIRD FLOOR PLAN - ELEV. "4"
A-2.0 1/4" = 1'-0"



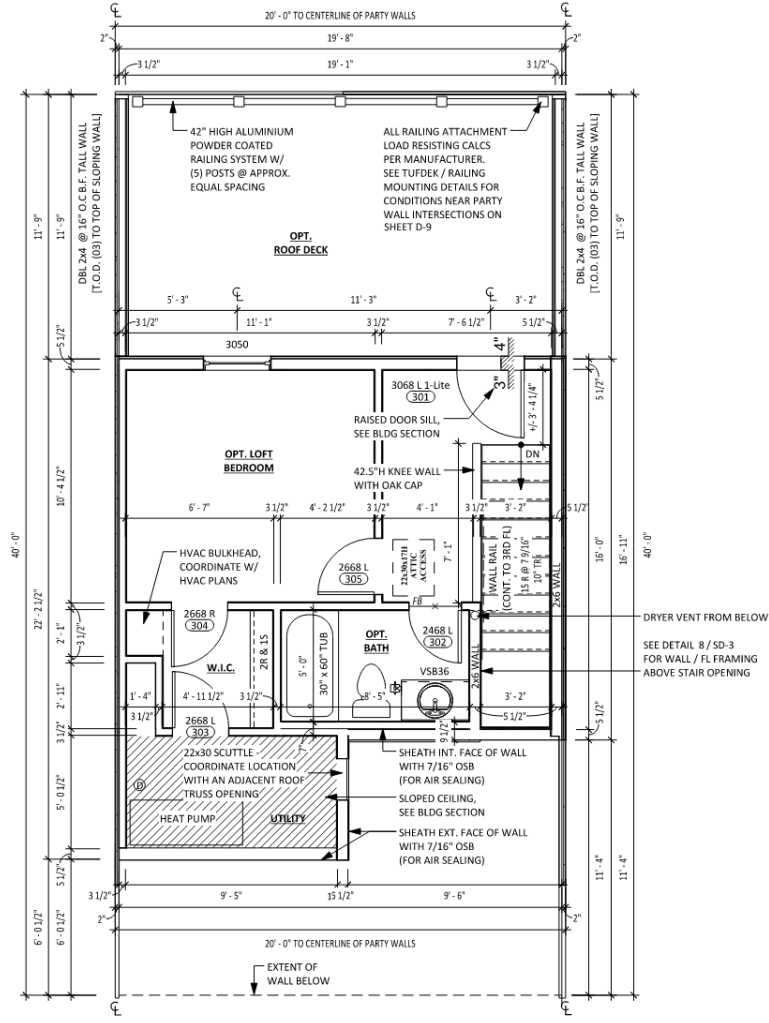
5 | OPT. OWNER'S BATH
A-2.0 1/4" = 1'-0"

OPTIONAL LOFT FLOOR PLAN OPTIONS REAR LOAD



1 | OPT. OPEN LOFT PLAN

A-3.0 1/4" = 1'-0"



2 | OPT. LOFT BEDROOM PLAN

A-3.0 1/4" = 1'-0"



Color Scheme	Brick	Mortar	Horizontal Siding	Horizontal Siding @ Opt. Loft	Painted Trim @ Windows (All Sides) & Front Door Alcove	Trim @ Front Bay/Paneling	Gutters & Downspouts	Fascia Trim	Fascia Trim & Parapet Trim @ Opt. Loft	Windows	Front Door	Rear Load Passage Door (RL Only)	Shutter (If Applicable)	Garage Door	Roof	Metal Roof	Deck Railing & Trim	Railings (Opt. Loft)
SC-A-1																		
	Rockview	M-10 (Med. Brown)	Tuscan Clay	Storm	Snowbound (SW 7004)	Snowbound (SW 7004)	White	Snowbound (SW 7004)	Black Fox (SW 7020)	White	Cape Verde (SW 6482)	Black Magic (SW 6991)	Black (002)	White	Charcoal	Charcoal	White	Black
SC-A-2																		
	Chesapeake	Soft White	Midnight Blue	Storm	Snowbound (SW 7004)	Snowbound (SW 7004)	White	Snowbound (SW 7004)	Black Fox (SW 7020)	White	Crabby Apple (SW 7592)	Black Magic (SW 6991)	Black (002)	White	Charcoal	Charcoal	White	Black
SC-A-3																		
	Rockview	M-10 (Med. Brown)	Tuscan Clay	Storm	Snowbound (SW 7004)	Snowbound (SW 7004)	White	Snowbound (SW 7004)	Black Fox (SW 7020)	White	Dewberry (SW 6552)	Black Magic (SW 6991)	Black (002)	White	Charcoal	Charcoal	White	Black
SC-A-4																		
	Ashfield	M-21 (Dk. Brown)	Platinum Gray	Storm	Snowbound (SW 7004)	Snowbound (SW 7004)	White	Snowbound (SW 7004)	Black Fox (SW 7020)	White	Cape Verde (SW 6482)	Black Magic (SW 6991)	Black (002)	White	Charcoal	Charcoal	White	Black
SC-A-5																		
	Silverview	Std. Gray	Glacier White	Storm	Snowbound (SW 7004)	Snowbound (SW 7004)	White	Snowbound (SW 7004)	Black Fox (SW 7020)	White	Crabby Apple (SW 7592)	Black Magic (SW 6991)	Black (002)	White	Charcoal	Charcoal	White	Black
SC-A-6																		
	Chesapeake	Soft White	Ageless Slate	Storm	Snowbound (SW 7004)	Snowbound (SW 7004)	White	Snowbound (SW 7004)	Black Fox (SW 7020)	White	Dewberry (SW 6552)	Black Magic (SW 6991)	Black (002)	White	Charcoal	Charcoal	White	Black
SC-A-7																		
	Ashfield	M-21 (Dk. Brown)	Glacier White	Storm	Snowbound (SW 7004)	Snowbound (SW 7004)	White	Snowbound (SW 7004)	Black Fox (SW 7020)	White	Dewberry (SW 6552)	Black Magic (SW 6991)	Black (002)	White	Charcoal	Charcoal	White	Black

Manufacturers:

BRICK: Glen-Gery
 SIDING & Shakes: Alside Coventry
 PAINT: Sherwin Williams
 GARAGE DOORS: Wayne Dalton

WINDOWS: M/I
 SHINGLES: GAF
 METAL ROOF: CMG Metals
 SHUTTERS: Mid-Atlantic

COLOR PALETTE

SITE
DETAILS



Proposed Tentative Entrance Monument
Proposed Dimensions: 12' wide x 5' tall with landscaping
surrounding the monument as depicted above



Main Entrance
Monument

SITE
DETAILS



Keystone Wall
42" Black Aluminum Safety Fence