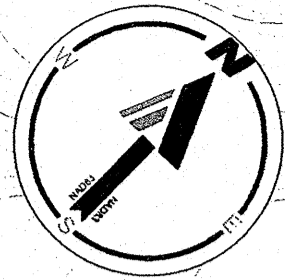
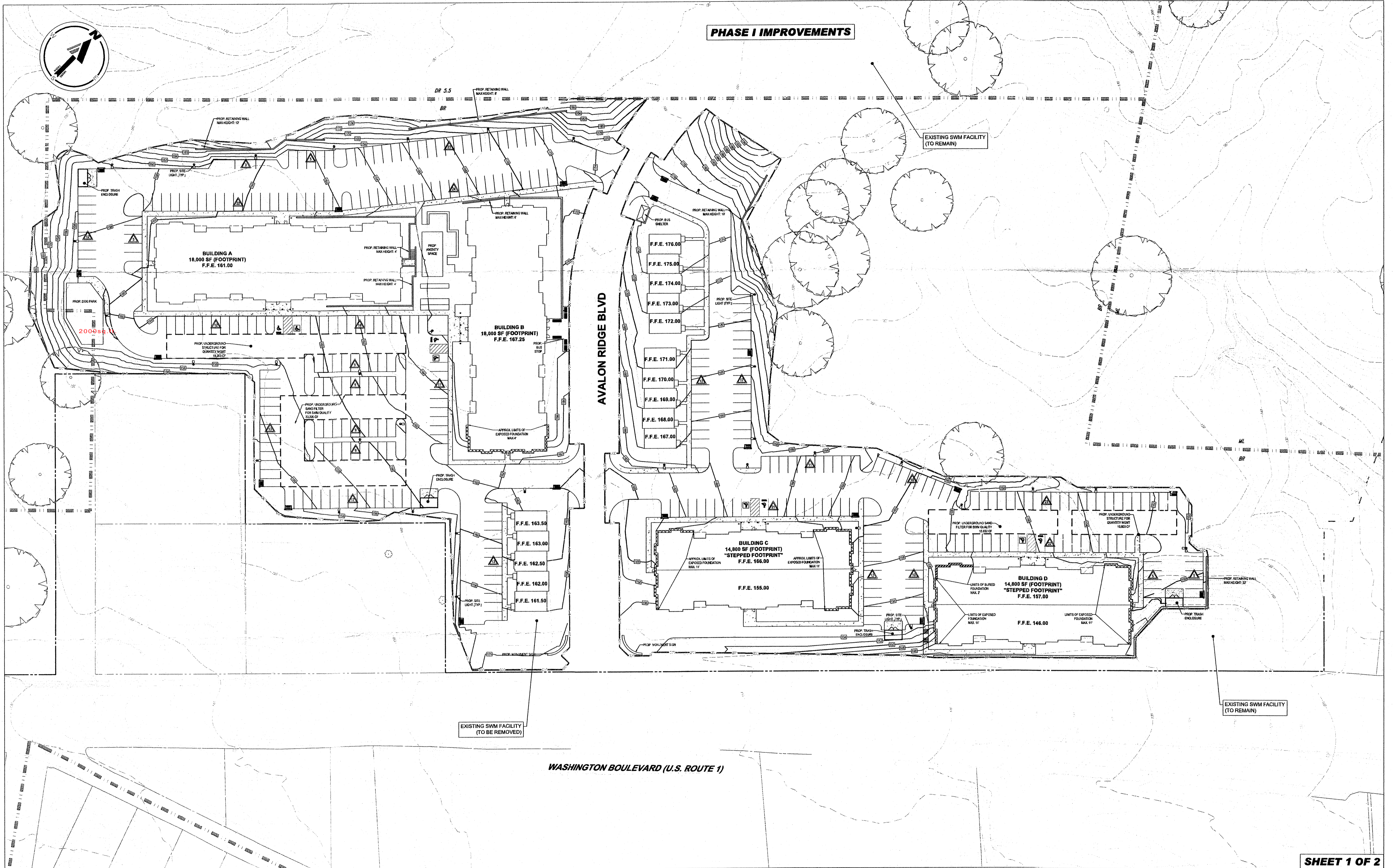


PHASE I IMPROVEMENTS

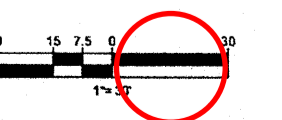


SHEET 1 OF 2

BOHLER

901 DULANEY VALLEY ROAD, SUITE 801
TOWSON, MARYLAND 21204
Phone: (410) 821-7900
Fax: (410) 821-7987

**FORGE OVERLOOK
PLAN TO ACCOMPANY DRP SUBMISSION**



MD192103.03 | 08/19/22 | CJB | Rev. 0